

# INTERNATIONAL WOOD TRADE

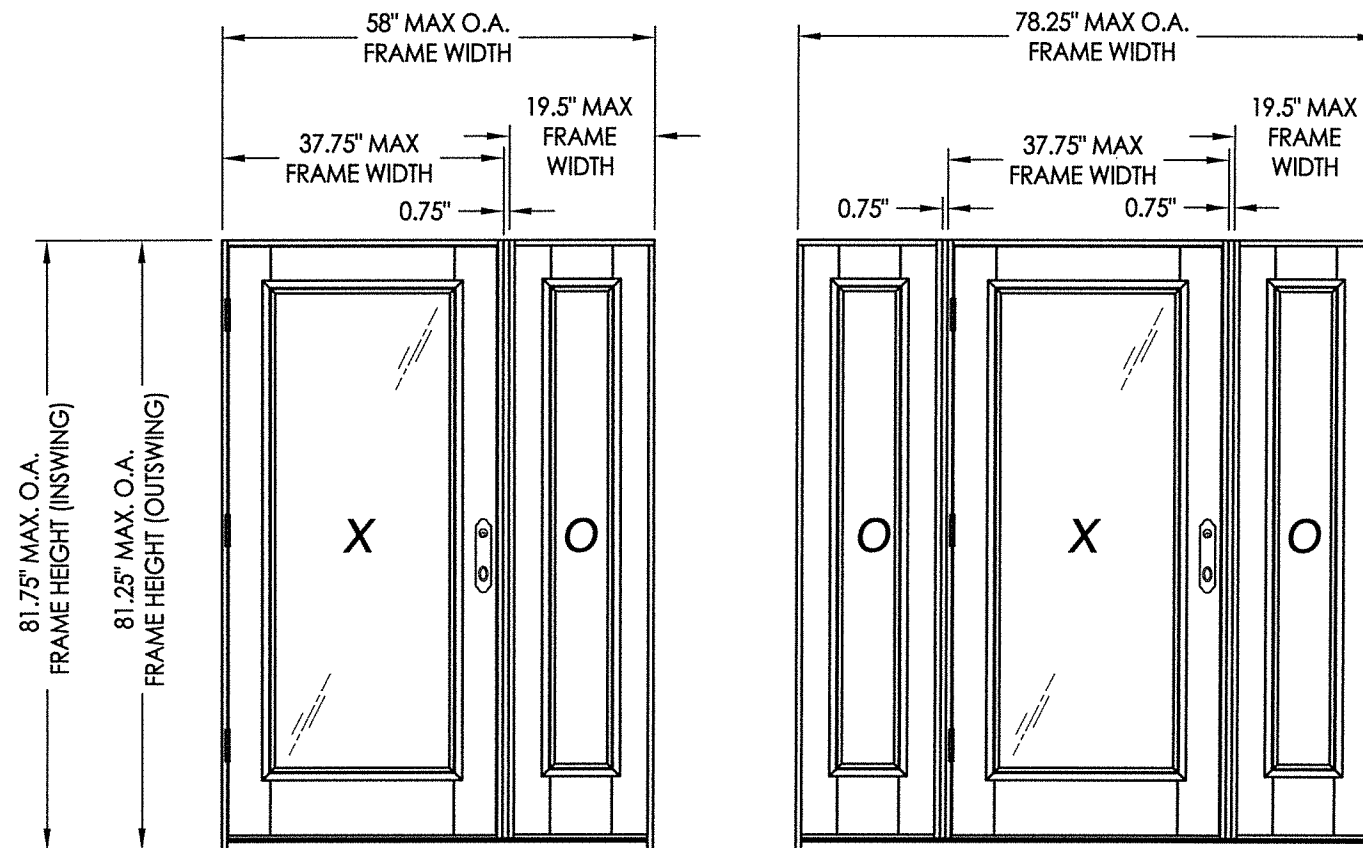
## WOOD GLAZED OR OPAQUE SINGLE DOOR w/ SIDELITE(S)

### IN SWING/OUT SWING "NON-IMPACT"

#### GENERAL NOTES

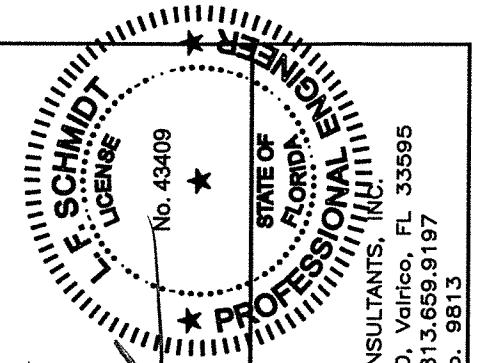
1. This product has been evaluated and is in compliance with the 5th Edition (2014) Florida Building Code (FBC) structural requirements excluding the "High Velocity Hurricane Zone" (HVHZ).
2. Product anchors shall be as listed and spaced as shown on details. Anchor embedment to base material shall be beyond wall dressing or stucco.
3. When used in areas requiring wind borne debris protection, this product is required to be protected with an impact resistant covering that complies with Section 1609.1.2 of the FBC.
4. For 2x stud framing construction, anchoring of these units shall be the same as that shown for 2x buck masonry construction.
5. Site conditions that deviate from the details of this drawing require further engineering analysis by a licensed engineer or registered architect.

TABLE OF CONTENTS	
SHEET#	DESCRIPTION
1	Typical Elevations, Design Pressures & General Notes
2	Door Panel Details
3	Sidelite Panel Details
4	Elevations
5	Horizontal & Vertical Cross Sections (2X Buck)
6	Horizontal & Vertical Cross Sections (1X Buck)
7	Horizontal & Vertical Cross Sections (Direct to Masonry)
8	Vertical Cross Sections (Thresholds)
9	Buck Anchoring
10	Frame Anchoring
11	Hardware Details
12	Bill of Materials & Components



CONFIGURATION	LOCK HARDWARE	DESIGN PRESSURE (PSF) IN SWING		DESIGN PRESSURE (PSF) OUT SWING	
		POSITIVE	NEGATIVE	POSITIVE	NEGATIVE
XO, OX, OXO	Lock & Deadbolt*	+40.0	-50.0	+40.0	-40.0
XO, OX, OXO	Multipoint*	+40.0	-50.0	+40.0	-40.0

\*See Sheet 4 for Hardware Specifications



Documents Prepared By:  
Lyndon F. Schmidt  
P.E. No. 43409

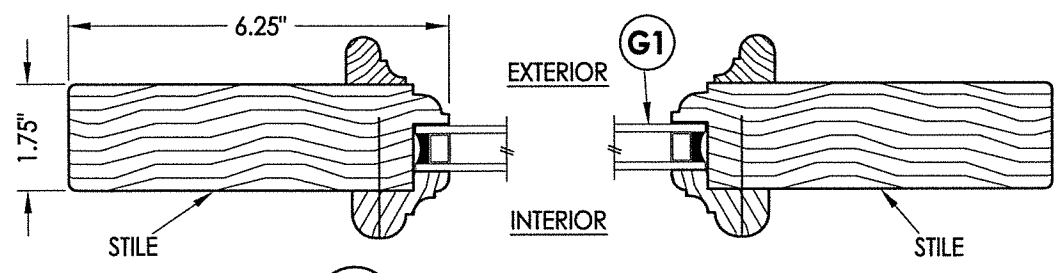
R.W. BUILDING CONSULTANTS, INC.  
P.O. Box 230, Valrico, FL 33595  
Phone No.: 813.659.9197  
FBPE C.A. No. 9813

PRODUCT:  
INTERNATIONAL WOOD TRADE  
WOOD DOOR

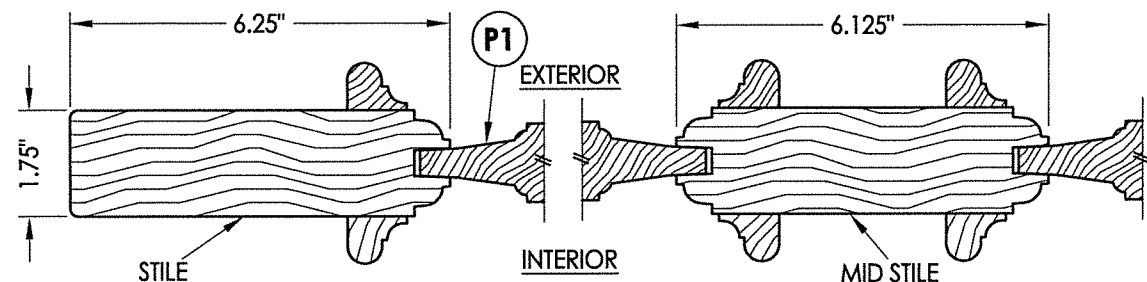
PART OR ASSEMBLY:  
TYPICAL ELEVATION, DESIGN  
PRESSURES & GENERAL NOTES

NO.	DATE	BY	REVISIONS

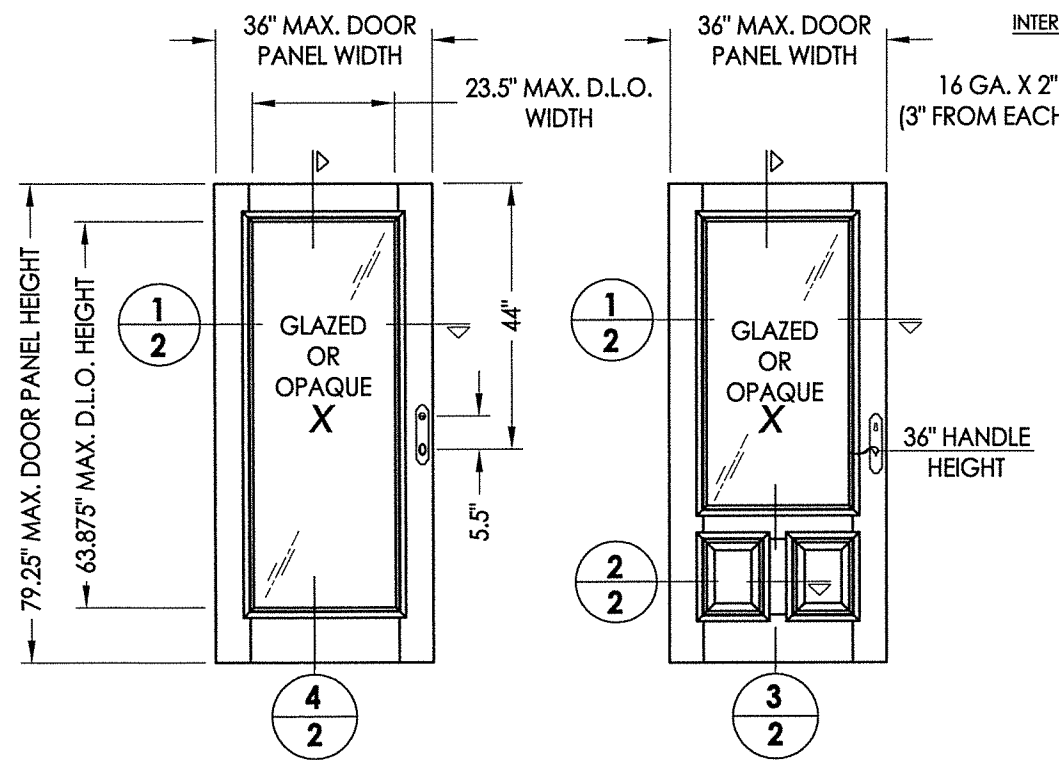
DATE: 8/10/16  
SCALE: N.T.S.  
DWG. BY: JK  
CHK. BY: LFS  
DRAWING NO.:  
FL-20800.2  
SHEET 1 OF 12



1  
2 HORIZONTAL CROSS SECTION

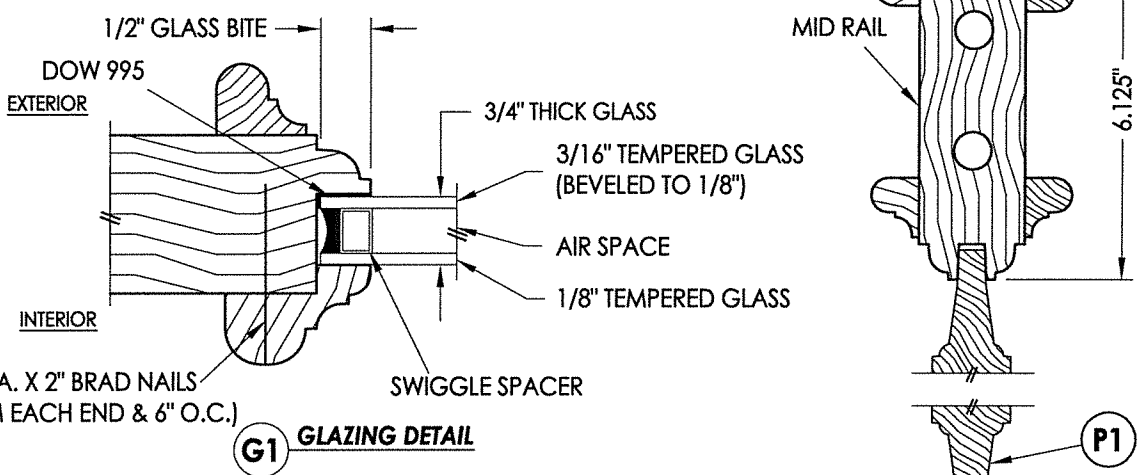


2  
2 HORIZONTAL CROSS SECTION

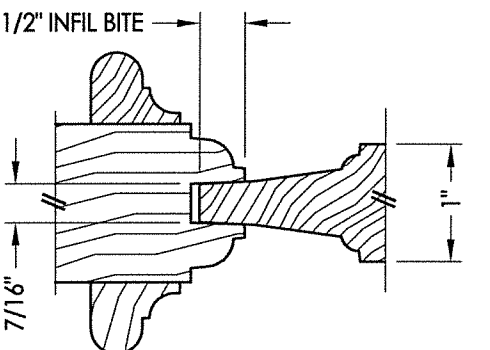


40 WOOD DOOR PANELS  
Glazed or Opaque

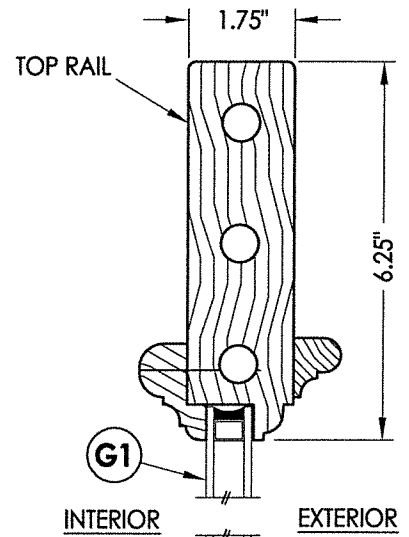
ALL WOOD DOOR COMPONENTS: SAPELE (G => 0.55)



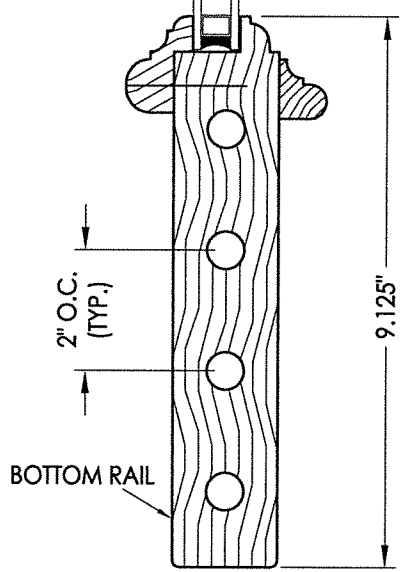
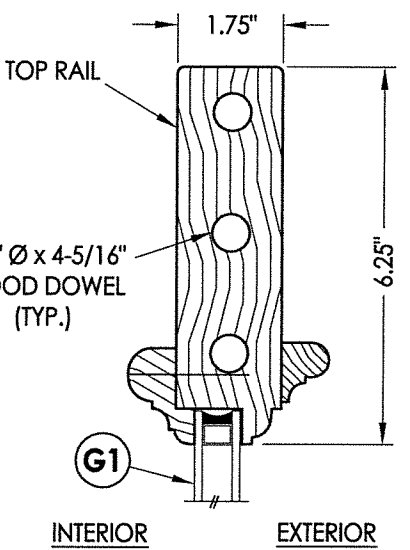
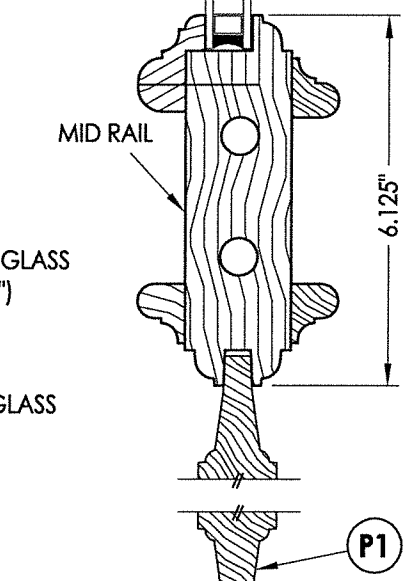
G1 GLAZING DETAIL



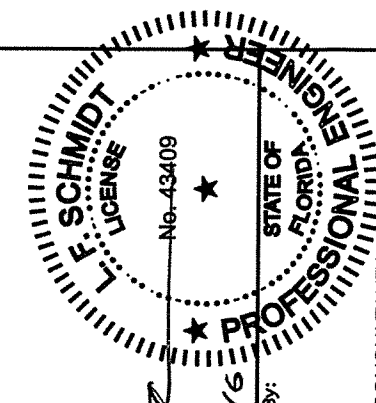
P1 PANEL INFIL DETAIL



3  
2 VERTICAL CROSS SECTION



4  
2 VERTICAL CROSS SECTION



Documents Prepared By:  
Lyndon F. Schmidt  
P.E. No. 43409

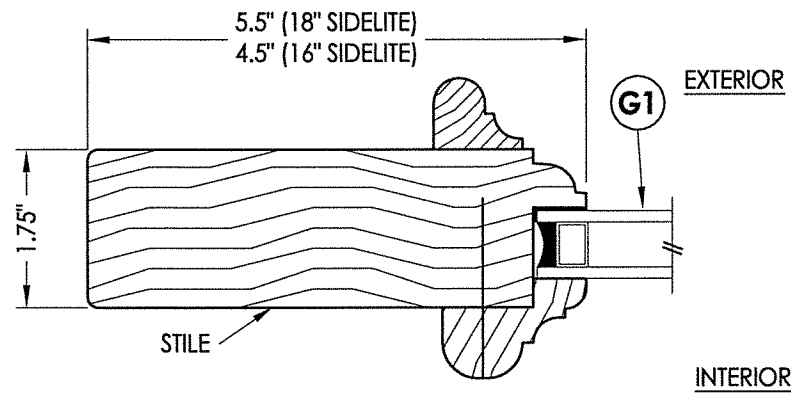
*LFS*  
8.24.16

RW BUILDING CONSULTANTS, INC.  
P.O. Box 230, Valrico, FL 33595  
Phone No.: 813.659.9197  
FBPE C.A. No. 9813

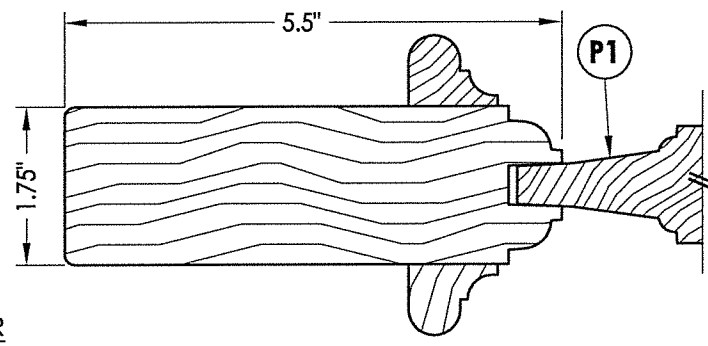
PRODUCT:	INTERNATIONAL WOOD TRADE WOOD DOOR	
PART OR ASSEMBLY:	DOOR PANEL DETAILS	
NO.	DATE	BY

DATE: 8/10/16  
SCALE: N.T.S.  
DWG. BY: JK  
CHK. BY: LFS  
DRAWING NO.: FL-20800.2  
SHEET 2 OF 12

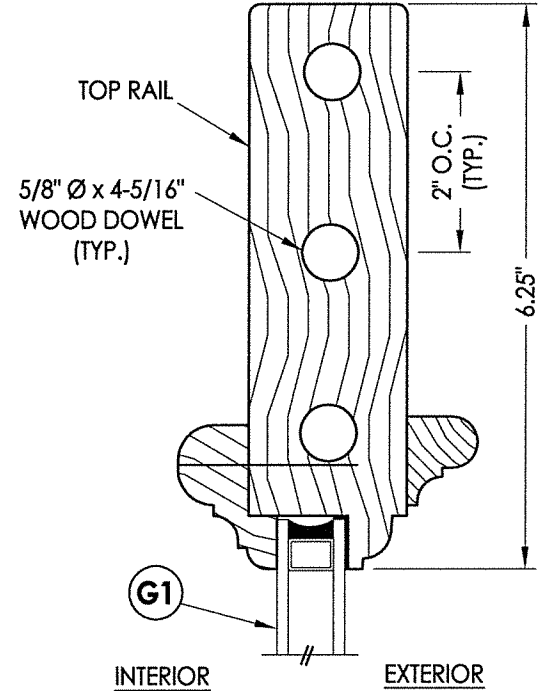
R:\Clients\International Wood Trade A - Florida Product Approvals\FL-20800 Swinging Exterior Door Assemblies\C - Drawings\FL-20800 (2014)\FL-20800.1-3.dwg, 3.2



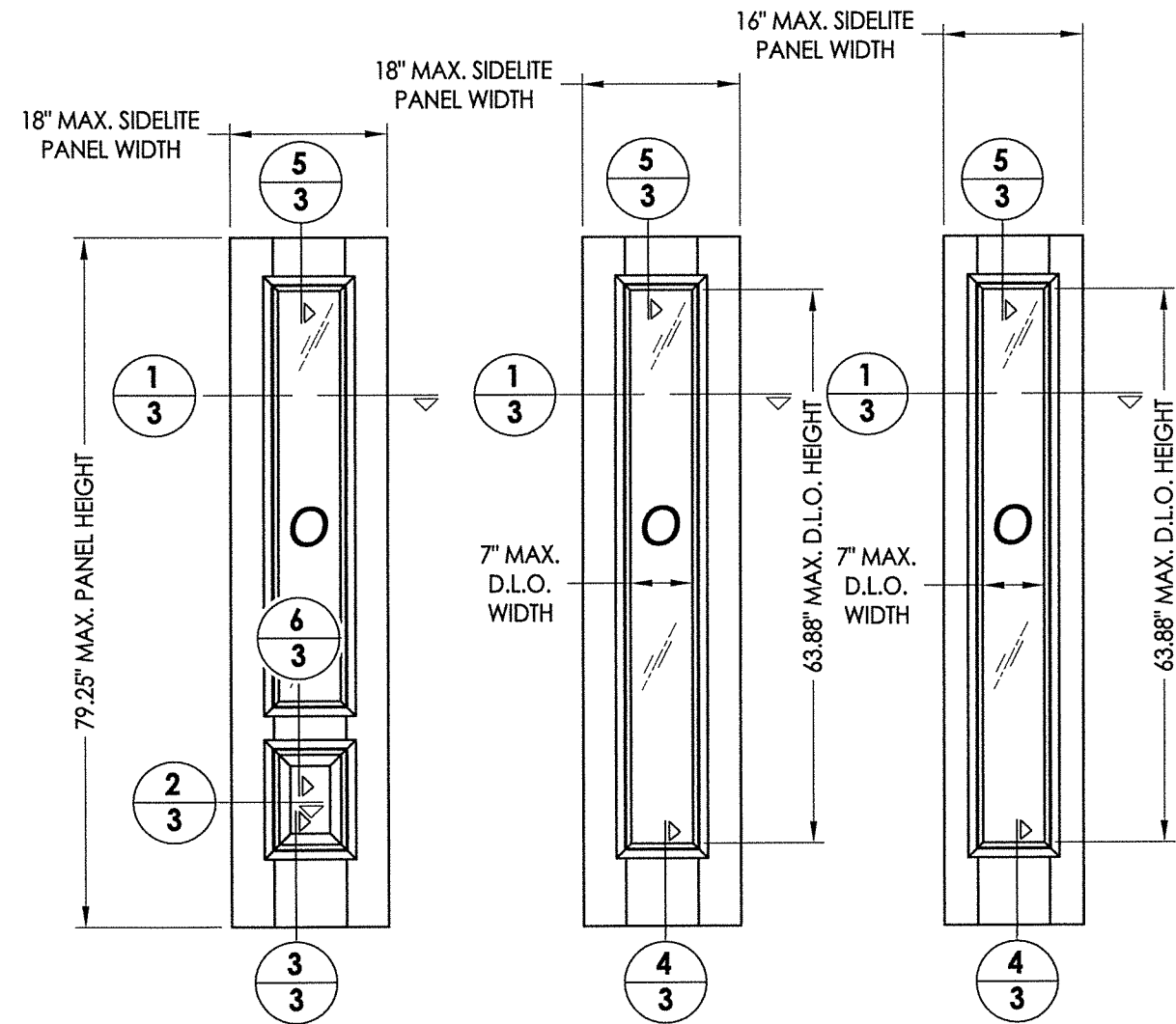
**1**  
**3** **HORIZONTAL CROSS SECTION**  
Glazed Panel Shown



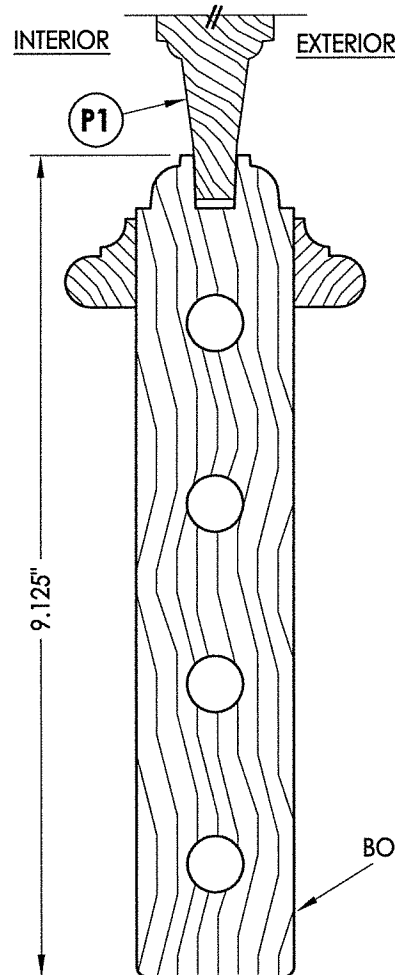
**2**  
**3** **HORIZONTAL CROSS SECTION**  
Opaque Panel Shown



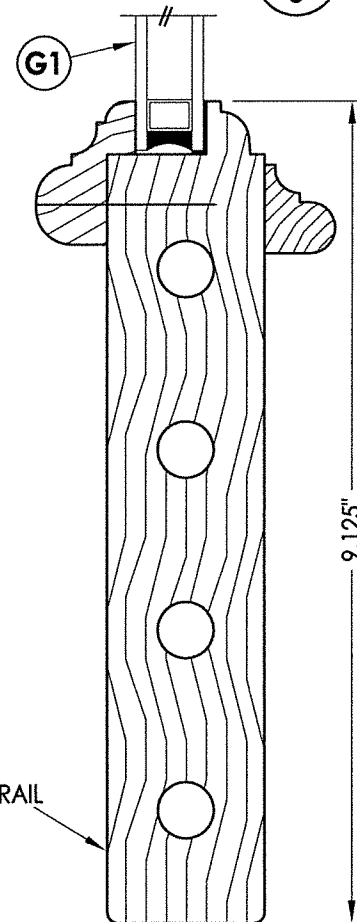
**5**  
**3** **VERTICAL CROSS SECTION**



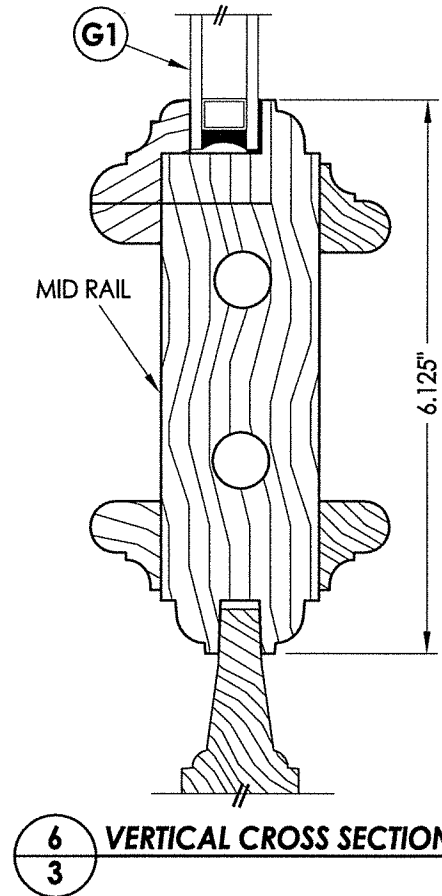
**50** **WOOD SIDELITE PANELS**



**3**  
**3** **VERTICAL CROSS SECTION**

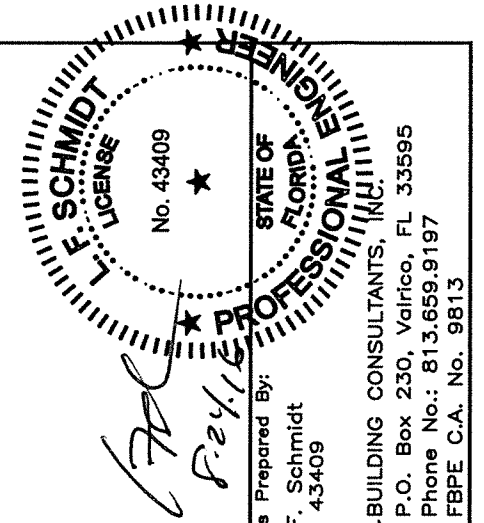


**4**  
**3** **VERTICAL CROSS SECTION**



**6**  
**3** **VERTICAL CROSS SECTION**

ALL WOOD SIDELITE COMPONENTS: SAPELE (G => 0.55)



Documents Prepared By:  
Lyndon F. Schmidt  
P.E. No. 43409

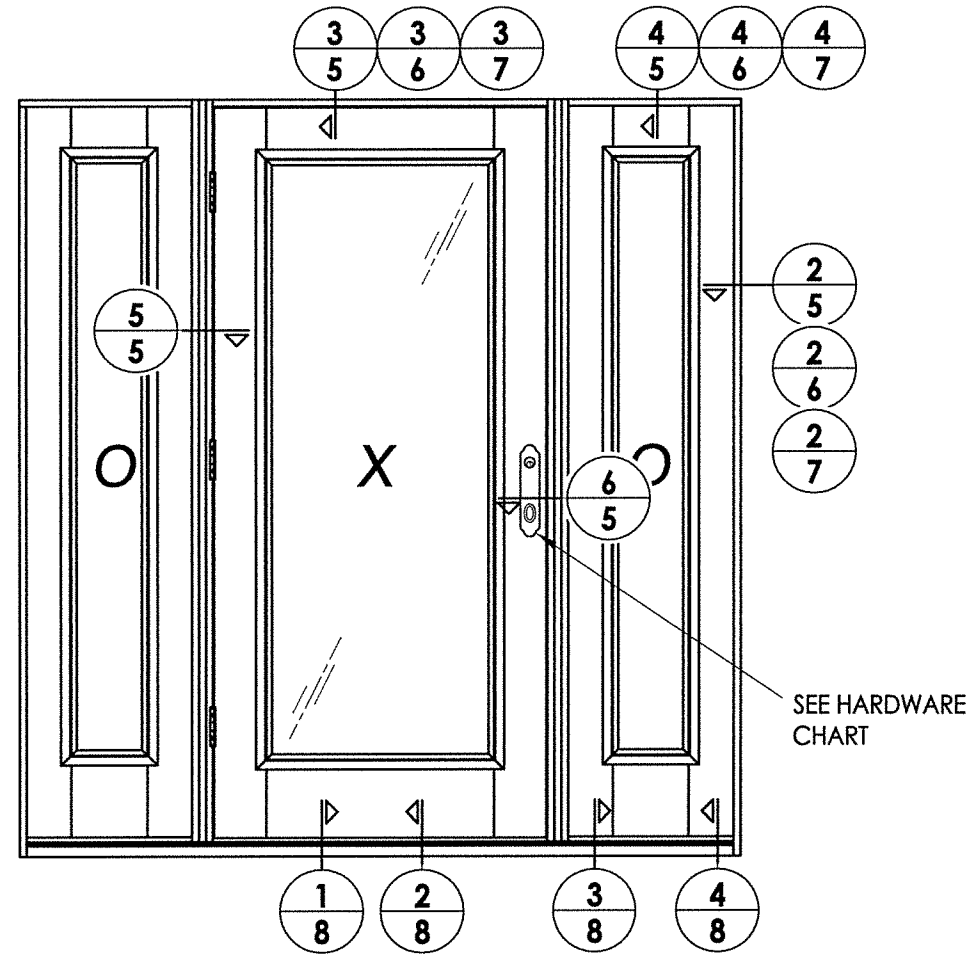
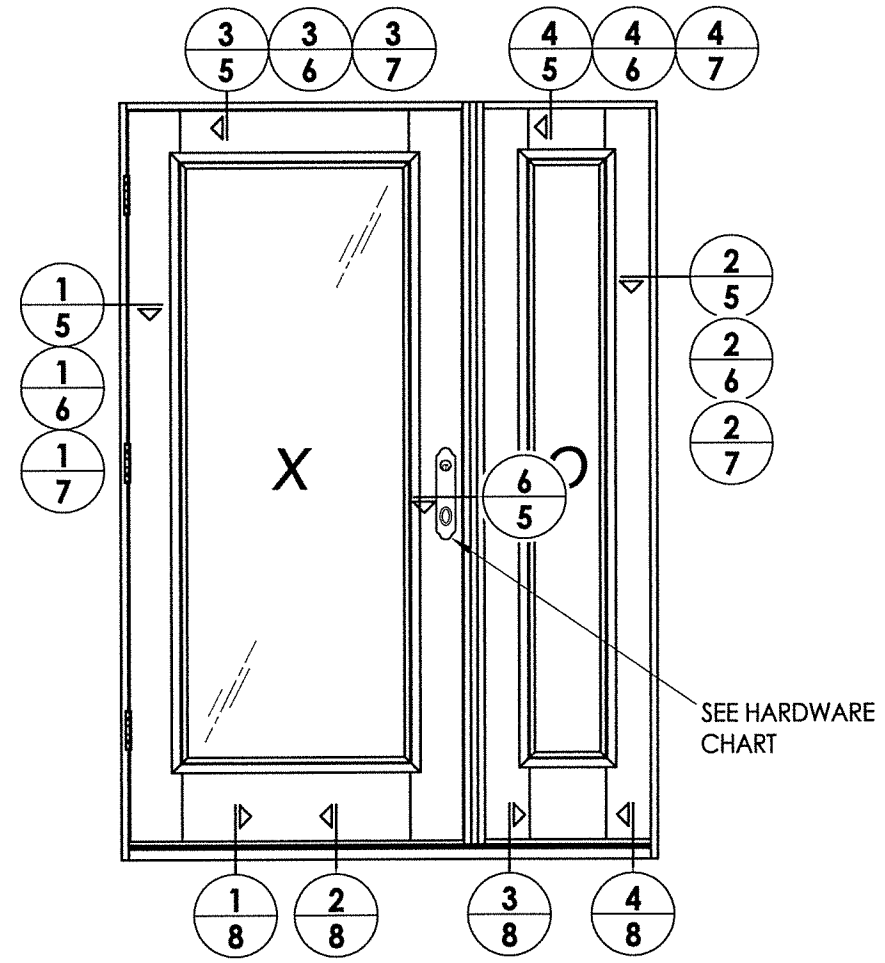
**RW** BUILDING CONSULTANTS, INC.  
P.O. Box 230, Vairico, FL 33595  
Phone No.: 813.659.9197  
FBPE C.A. No. 9813

PRODUCT:  
INTERNATIONAL WOOD TRADE  
WOOD DOOR

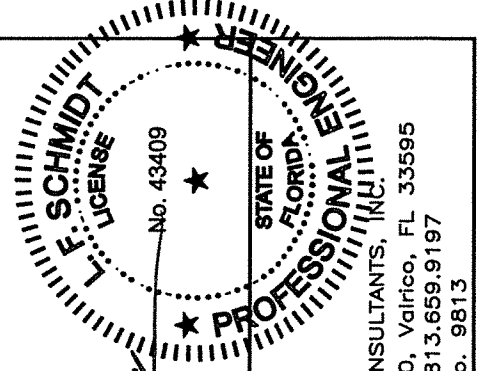
PART OR ASSEMBLY:  
SIDELITE PANEL DETAILS

NO.	DATE	BY	REVISIONS

DATE: 8/17/16  
SCALE: N.T.S.  
DWG. BY: JK  
CHK. BY: LFS  
DRAWING NO.: FL-20800.2  
SHEET 3 OF 12



HARDWARE TABLE	
MANUFACTURER	MODEL
RIDGECREST (SURE-LOC)	<u>HANDLE SET LOCK &amp; DEADBOLT:</u> RUSTIC SERIES
G-U	<u>MULTIPOINT LOCK (3-pt Tongue):</u> SECURY AUTOMATIC DOOR LOCK FOR LEVER HANDLE (6-35856-01-R-8B) <u>MORTISE LOCK TRIM: EMTEK</u>

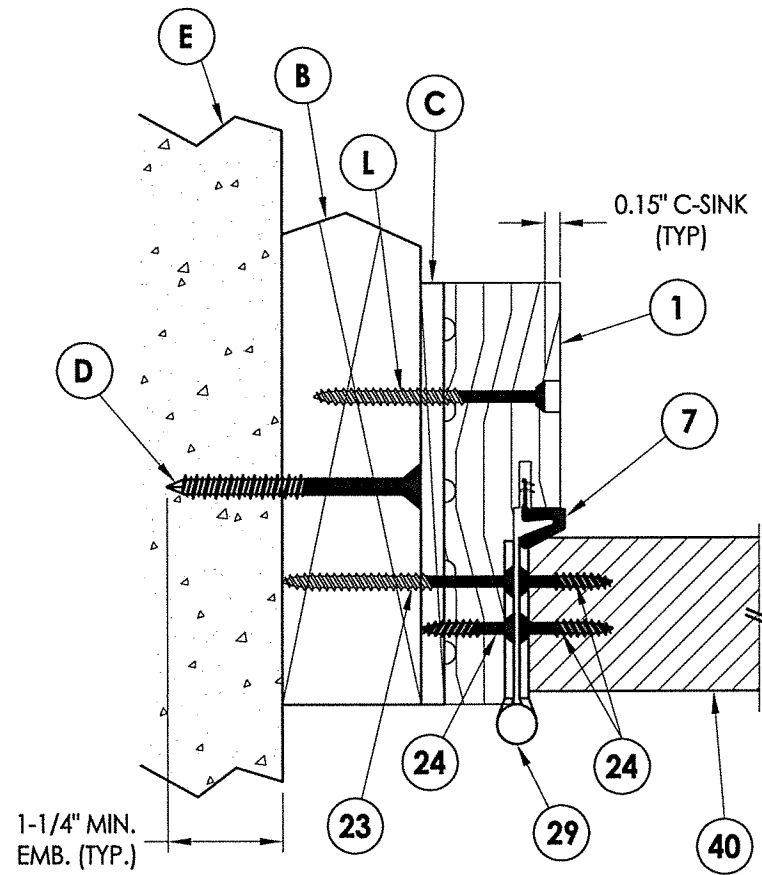


*LFS*  
*R.W.*  
 Documents Prepared By:  
 Lyndon F. Schmidt  
 P.E. No. 43409  
 BUILDING CONSULTANTS, INC.  
 P.O. Box 230, Valrico, FL 33595  
 Phone No.: 813.659.9197  
 FBPE C.A. No. 9813

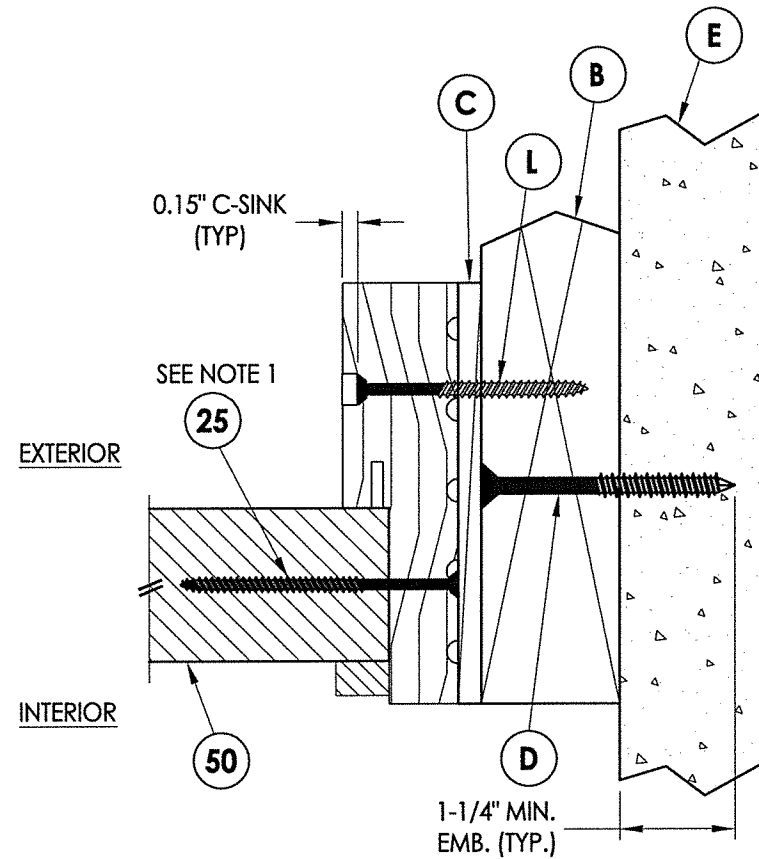
PRODUCT: INTERNATIONAL WOOD TRADE WOOD DOOR  
 PART OR ASSEMBLY: ELEVATIONS

NO.	DATE	BY

DATE: 8/10/16  
 SCALE: N.T.S.  
 DWG. BY: JK  
 CHK. BY: LFS  
 DRAWING NO.: FL-20800.2  
 SHEET 4 OF 12

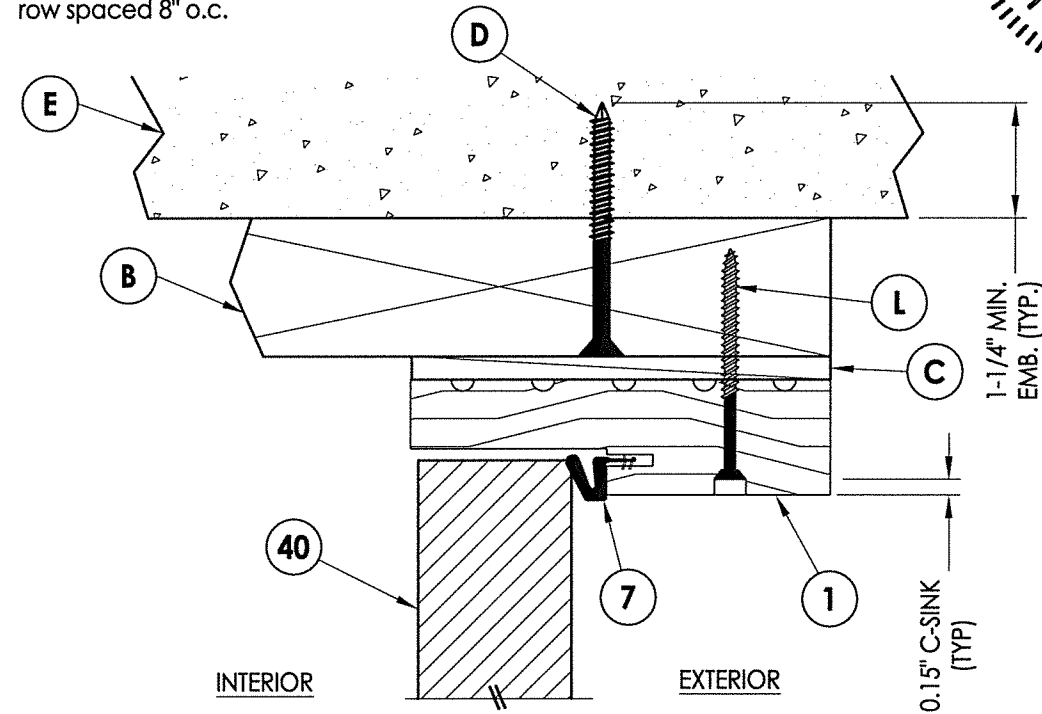


**1** HORIZONTAL CROSS SECTION  
5 Inswing shown (Outswing similar)

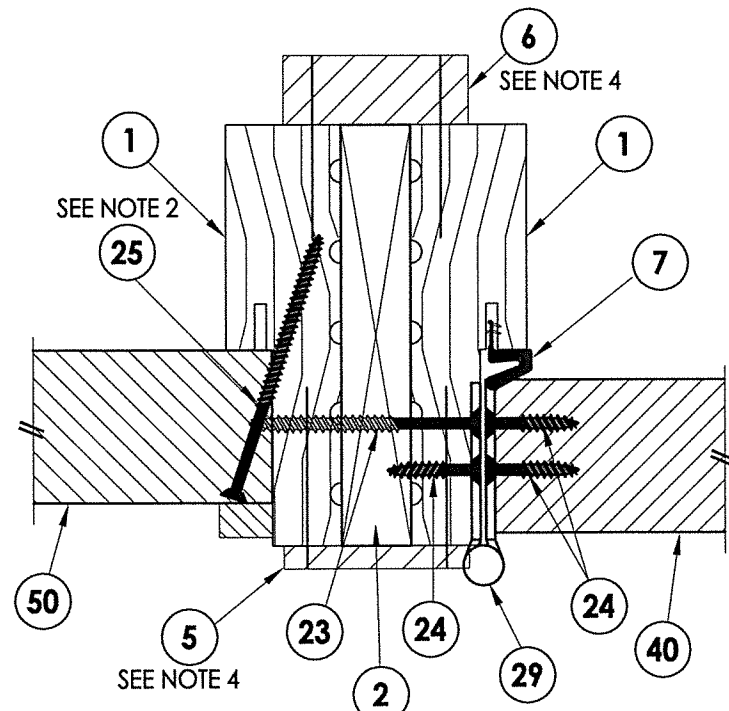


**2** HORIZONTAL CROSS SECTION  
5 Inswing shown (Outswing similar)

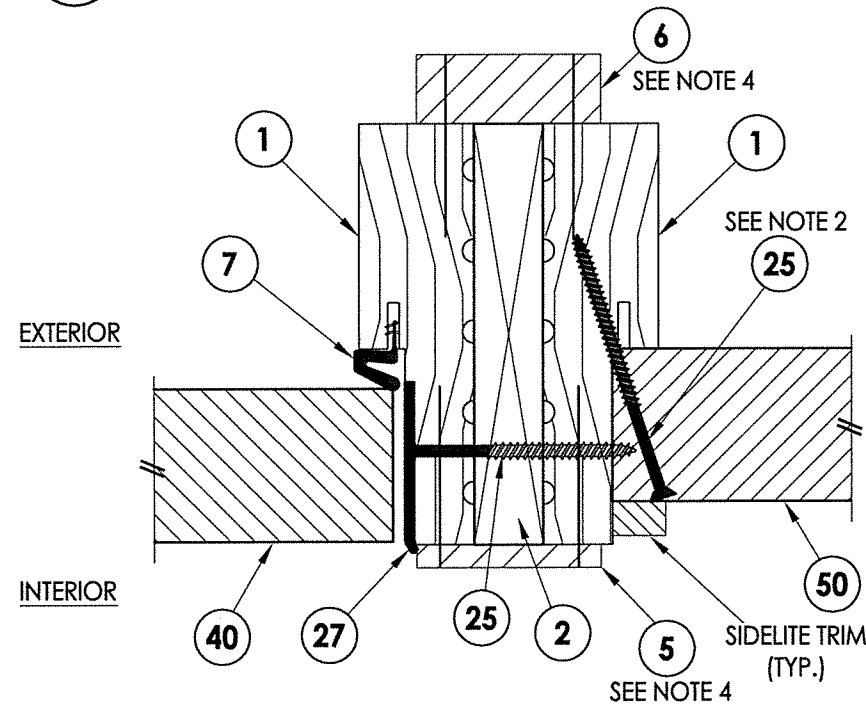
- Notes:
1. Sidelite assembly screws located 4" & 8" from the top & bottom plus 3 more screws equally spaced between (7 screws total per side jamb).
  2. Sidelite assembly screws located 6" & 24" from the top & bottom from each end (4 screws total per side jamb).
  3. Sidelite assembly screws located 3" from each end (2 screws along head jamb).
  4. Mullion trim attached w/ structural adhesive & 2 rows of 16 GA. X 2" brad nails, each row spaced 8" o.c.



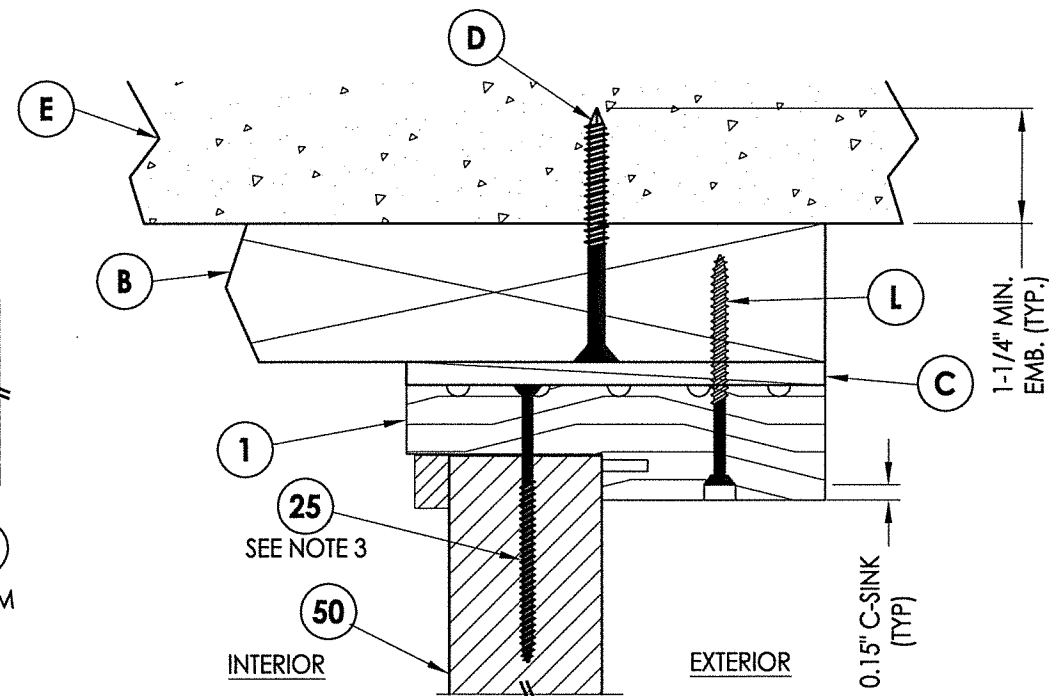
**3** VERTICAL CROSS SECTION  
5 Inswing shown (Outswing similar)



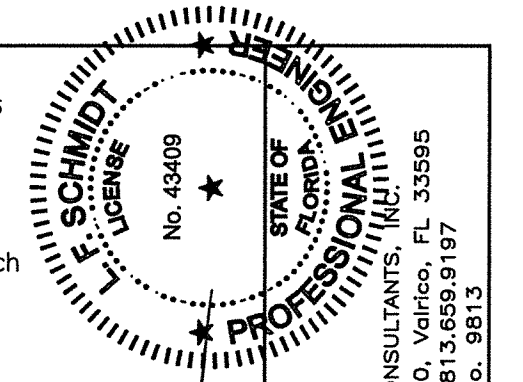
**5** HORIZONTAL CROSS SECTION  
5 Inswing shown (Outswing similar)



**6** HORIZONTAL CROSS SECTION  
5 Inswing shown (Outswing similar)



**4** VERTICAL CROSS SECTION  
5 Inswing shown (Outswing similar)



Documents Prepared By:  
Lyndon F. Schmidt  
P.E. No. 43409

R.W. BUILDING CONSULTANTS, INC.  
P.O. Box 230, Valrico, FL 33595  
Phone No.: 813.659.9197  
FBPE C.A. No. 9813

PRODUCT:  
INTERNATIONAL WOOD TRADE  
WOOD DOOR

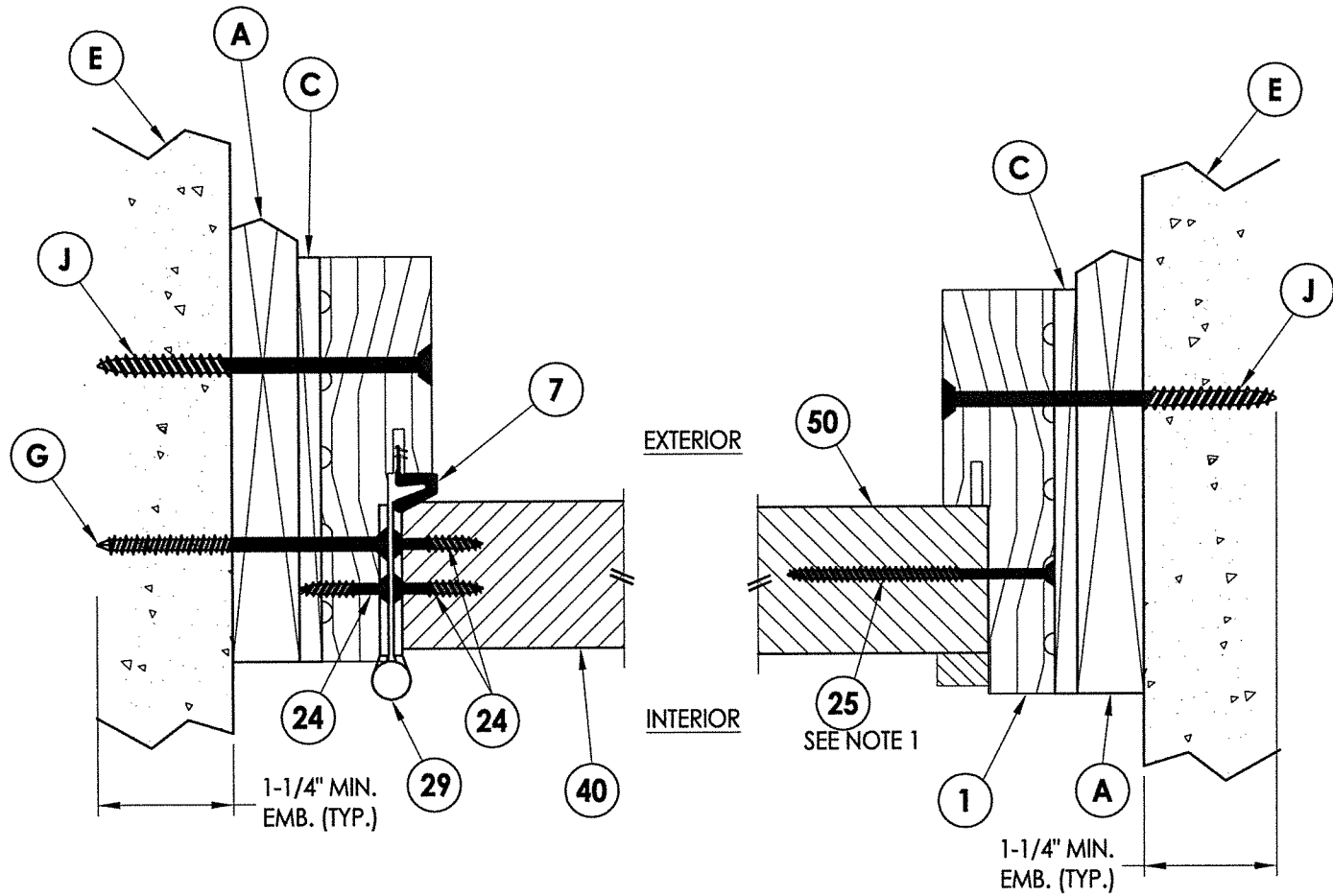
PART OR ASSEMBLY:  
HORIZONTAL & VERTICAL  
CROSS SECTIONS (2X BUCK)

NO.	DATE	BY

DATE: 8/10/16  
SCALE: N.T.S.  
DWG. BY: JK  
CHK. BY: LFS  
DRAWING NO.: FL-20800.2  
SHEET 5 OF 12

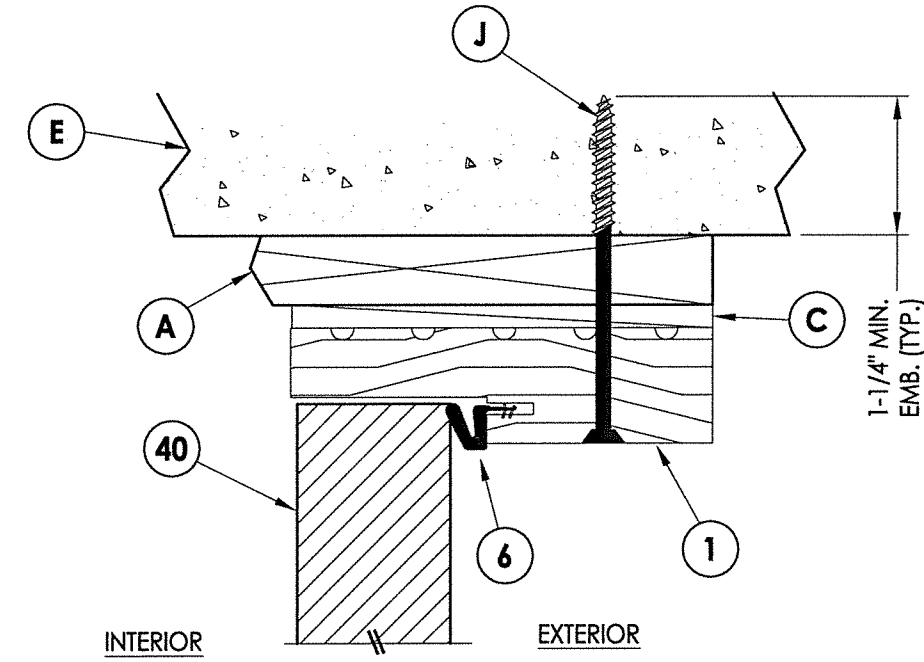
**Notes:**

1. Sidelite assembly screws located 4" & 8" from the top & bottom plus 3 more screws equally spaced between (7 screws total per side jamb).
2. Sidelite assembly screws located 3" from each end (2 screws along head jamb).

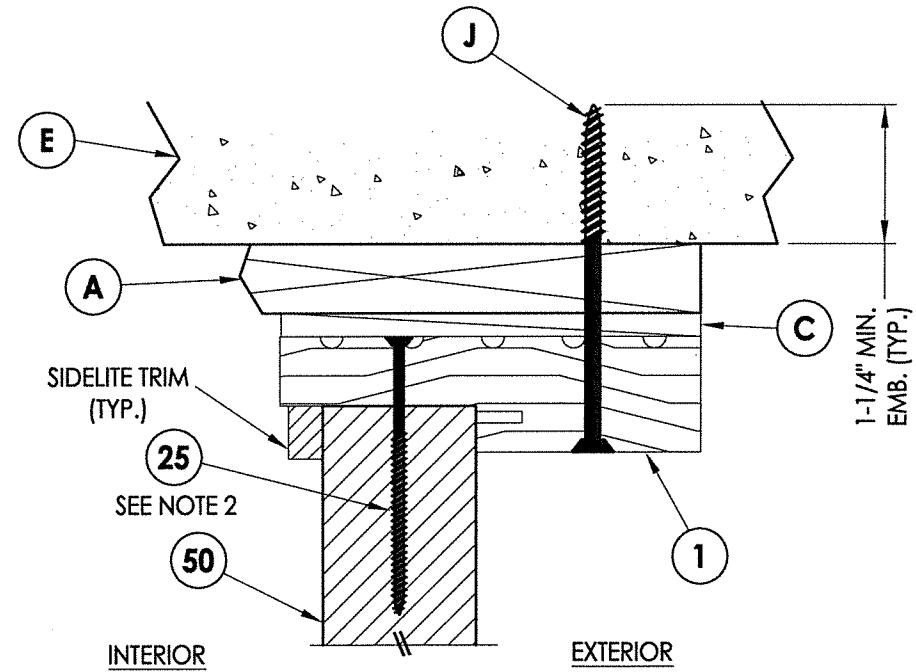


**1**  
**6** **HORIZONTAL CROSS SECTION**  
Shown w/ 1X sub-buck  
Inswing shown (Outswing similar)

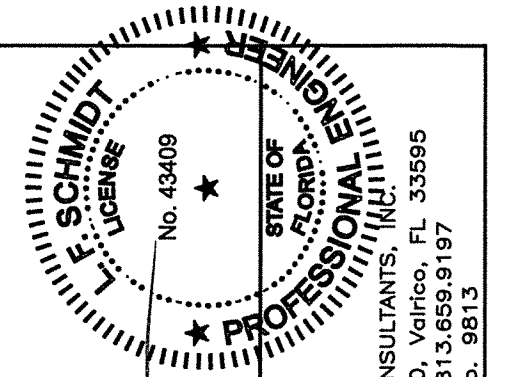
**2**  
**6** **HORIZONTAL CROSS SECTION**  
Shown w/ 1X sub-buck  
Inswing shown (Outswing similar)



**3**  
**6** **VERTICAL CROSS SECTION**  
Shown w/ 1X sub-buck  
Inswing shown (Outswing similar)



**4**  
**6** **VERTICAL CROSS SECTION**  
Shown w/ 1X sub-buck  
Inswing shown (Outswing similar)



Documents Prepared By:  
Lyndon F. Schmidt  
P.E. No. 43409

**RW** BUILDING CONSULTANTS, INC.  
P.O. Box 230, Valrico, FL 33595  
Phone No.: 813.659.9197  
FBPE C.A. No. 9813

PRODUCT:  
INTERNATIONAL WOOD TRADE  
WOOD DOOR

PART OR ASSEMBLY:  
HORIZONTAL & VERTICAL  
CROSS SECTIONS (1X BUCK)

NO.	DATE	BY	REVISIONS

DATE: 8/10/16

SCALE: N.T.S.

DWG. BY: JK

CHK. BY: LFS

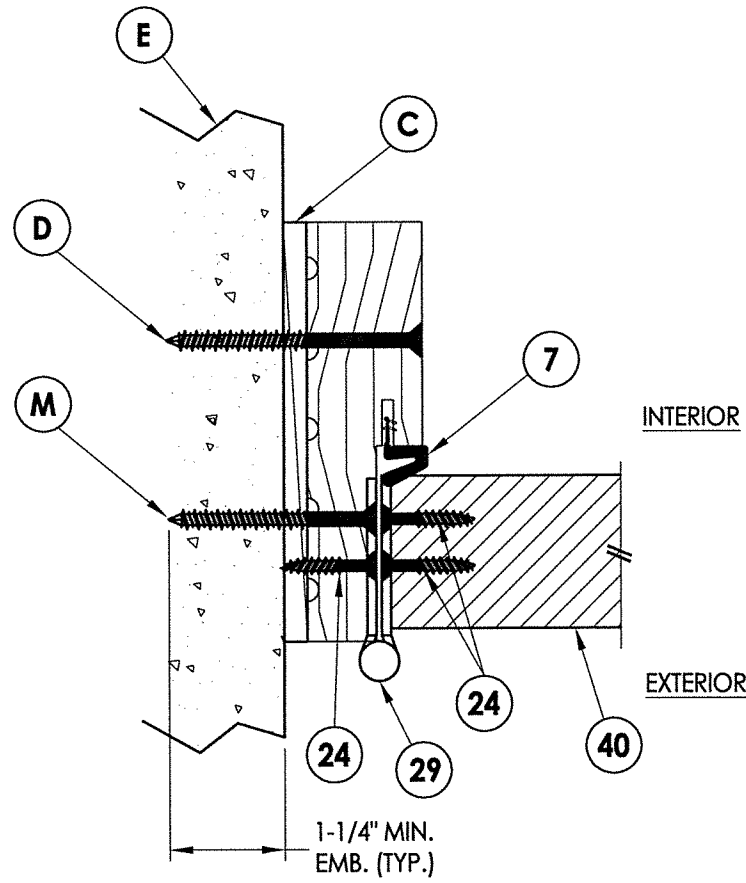
DRAWING NO.:

FL-20800.2

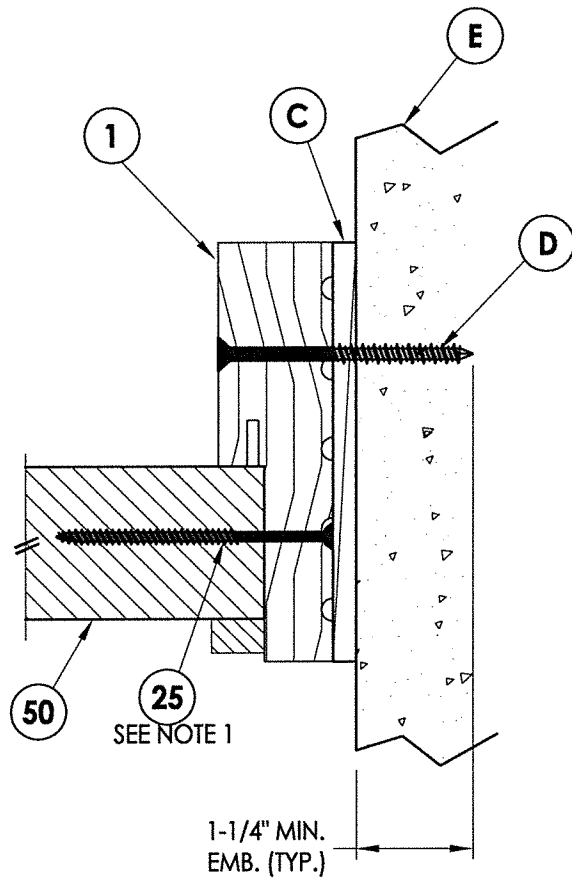
SHEET 6 OF 12

**Notes:**

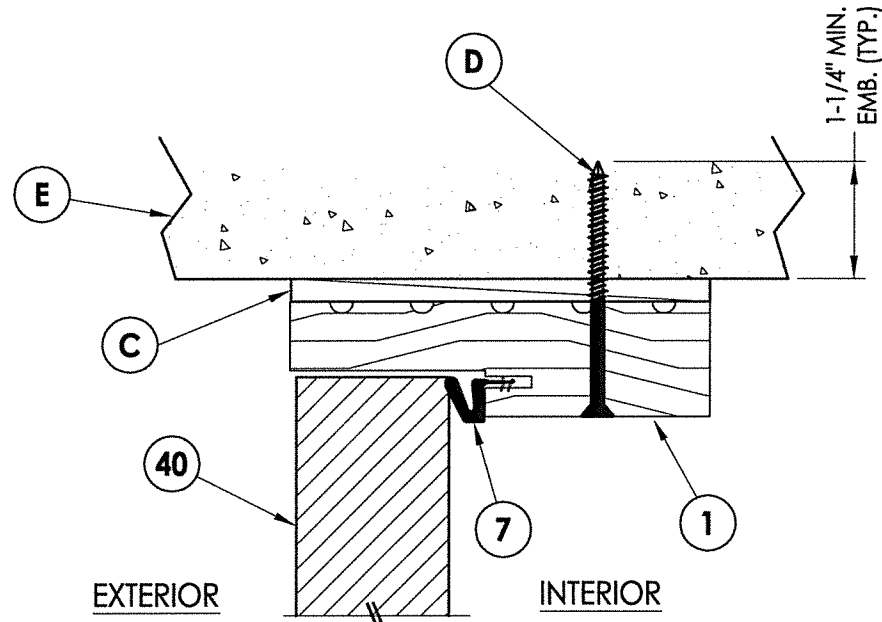
1. Sidelite assembly screws located 4" & 8" from the top & bottom plus 3 more screws equally spaced between (7 screws total per side jamb).
2. Sidelite assembly screws located 3" from each end (2 screws along head jamb).



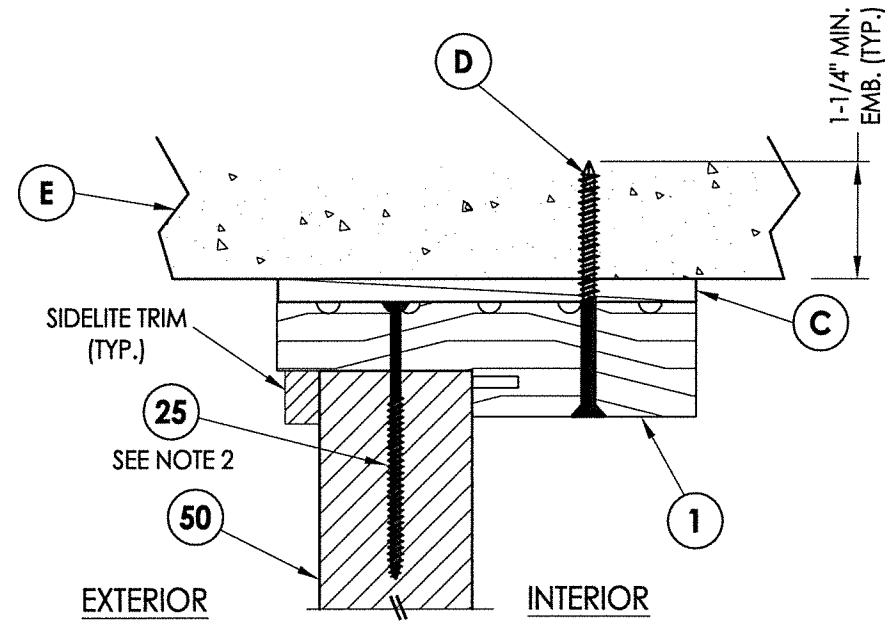
**1** **HORIZONTAL CROSS SECTION**  
**7** Shown Direct to Masonry  
 Outswing only



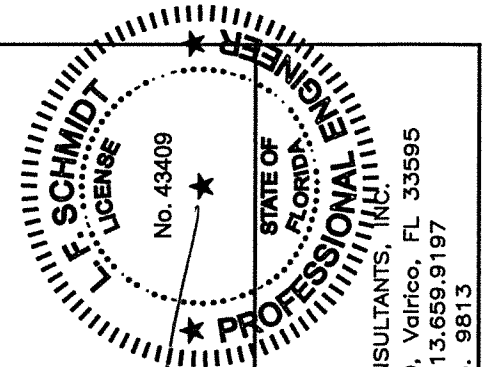
**2** **HORIZONTAL CROSS SECTION**  
**7** Shown Direct to Masonry  
 Outswing only



**3** **VERTICAL CROSS SECTION**  
**7** Shown Direct to Masonry  
 Outswing only



**4** **VERTICAL CROSS SECTION**  
**7** Shown Direct to Masonry  
 Outswing only



*LFS*  
*f. 24.16*

Documents Prepared By:  
 Lyndon F. Schmidt  
 P.E. No. 43409

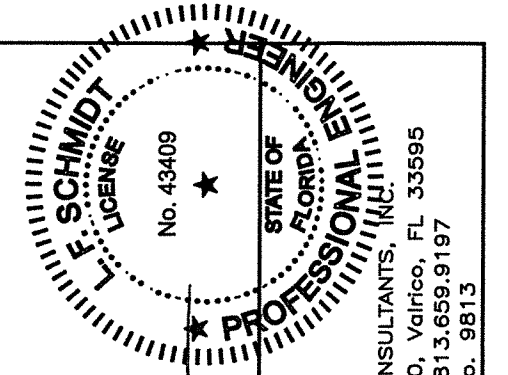
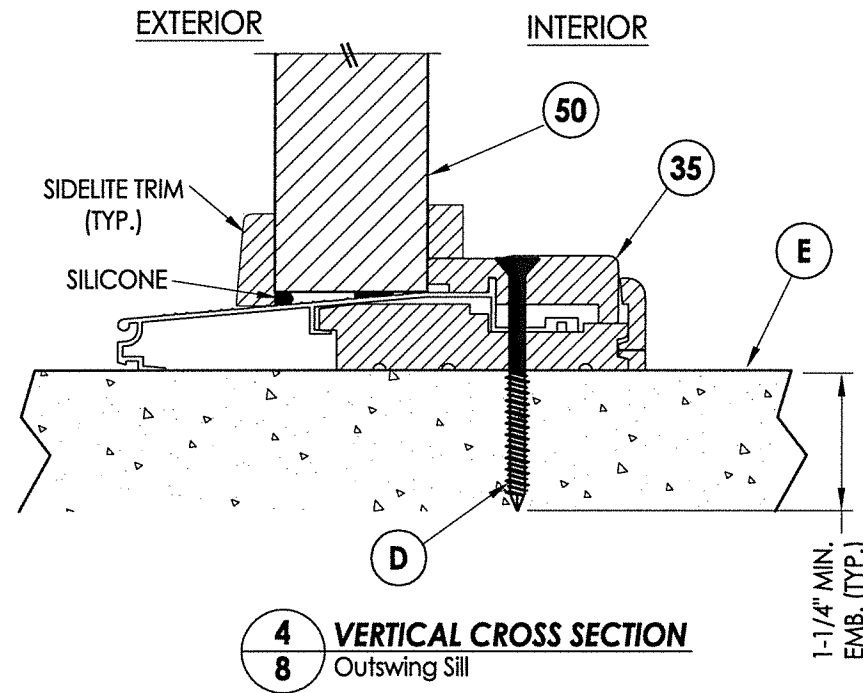
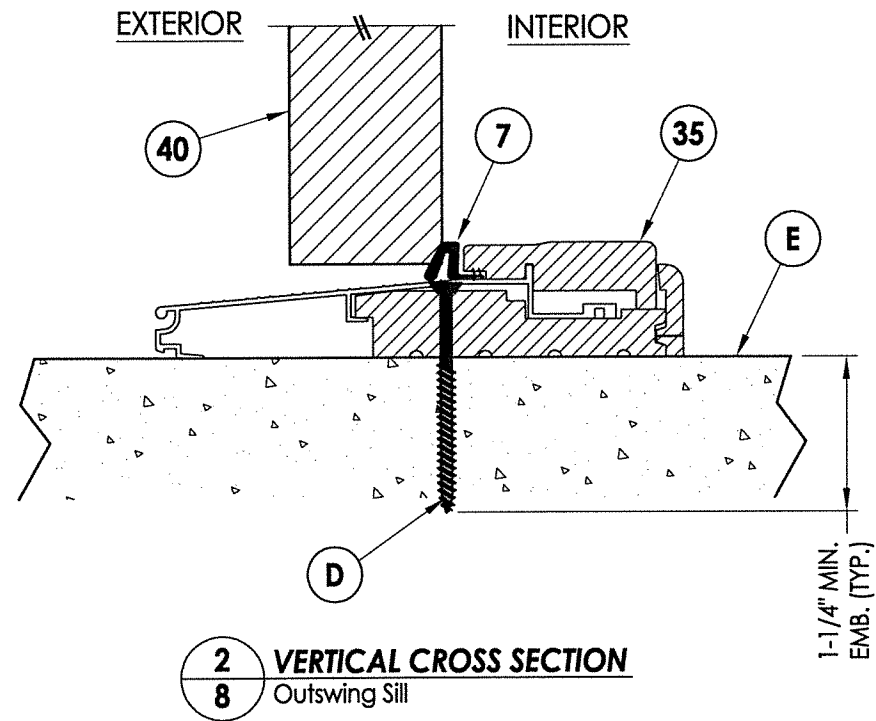
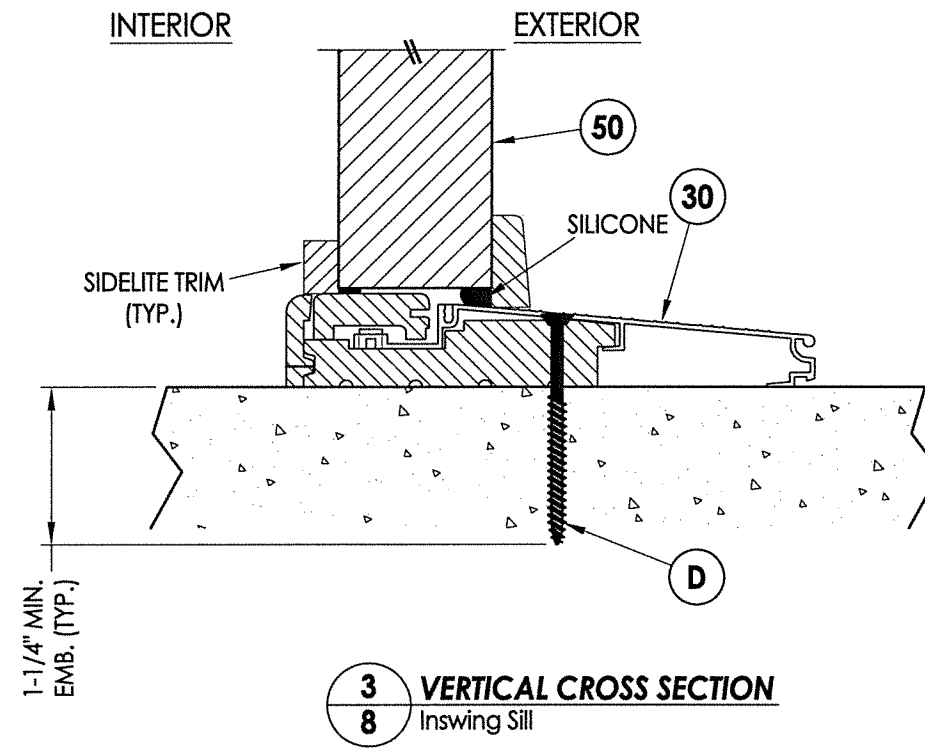
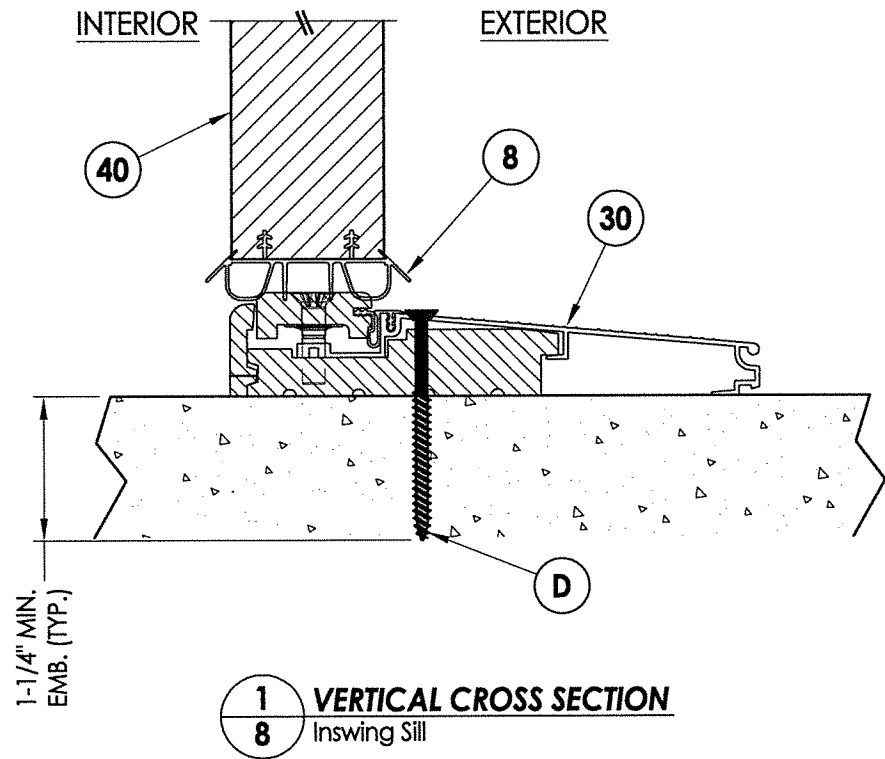
**RW BUILDING CONSULTANTS, INC.**  
 P.O. Box 230, Valrico, FL 33595  
 Phone No.: 813.659.9197  
 FBPE C.A. No. 9813

PRODUCT:  
 INTERNATIONAL WOOD TRADE  
 WOOD DOOR

PART OR ASSEMBLY:  
 HORIZONTAL & VERTICAL CROSS  
 SECTIONS (DIRECT TO MASONRY)

NO.	DATE	BY

DATE: 8/10/16  
 SCALE: N.T.S.  
 DWG. BY: JK  
 CHK. BY: LFS  
 DRAWING NO.: FL-20800.2  
 SHEET 7 OF 12



*LFS*  
*8.24.16*

Documents Prepared By:  
Lyndon F. Schmidt  
P.E. No. 43409

*RW* BUILDING CONSULTANTS, INC.  
P.O. Box 230, Valrico, FL 33595  
Phone No.: 813.659.9197  
FBPE C.A. No. 9813

PRODUCT:  
INTERNATIONAL WOOD TRADE  
WOOD DOOR

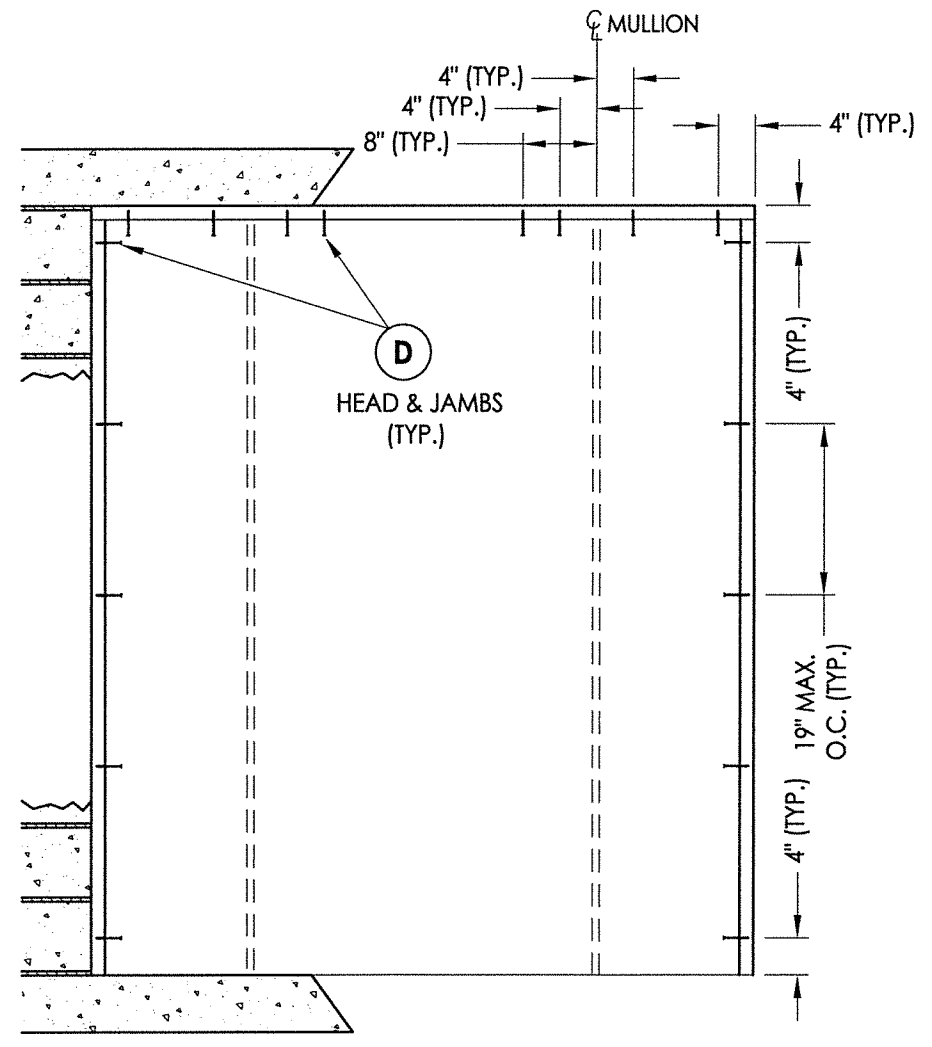
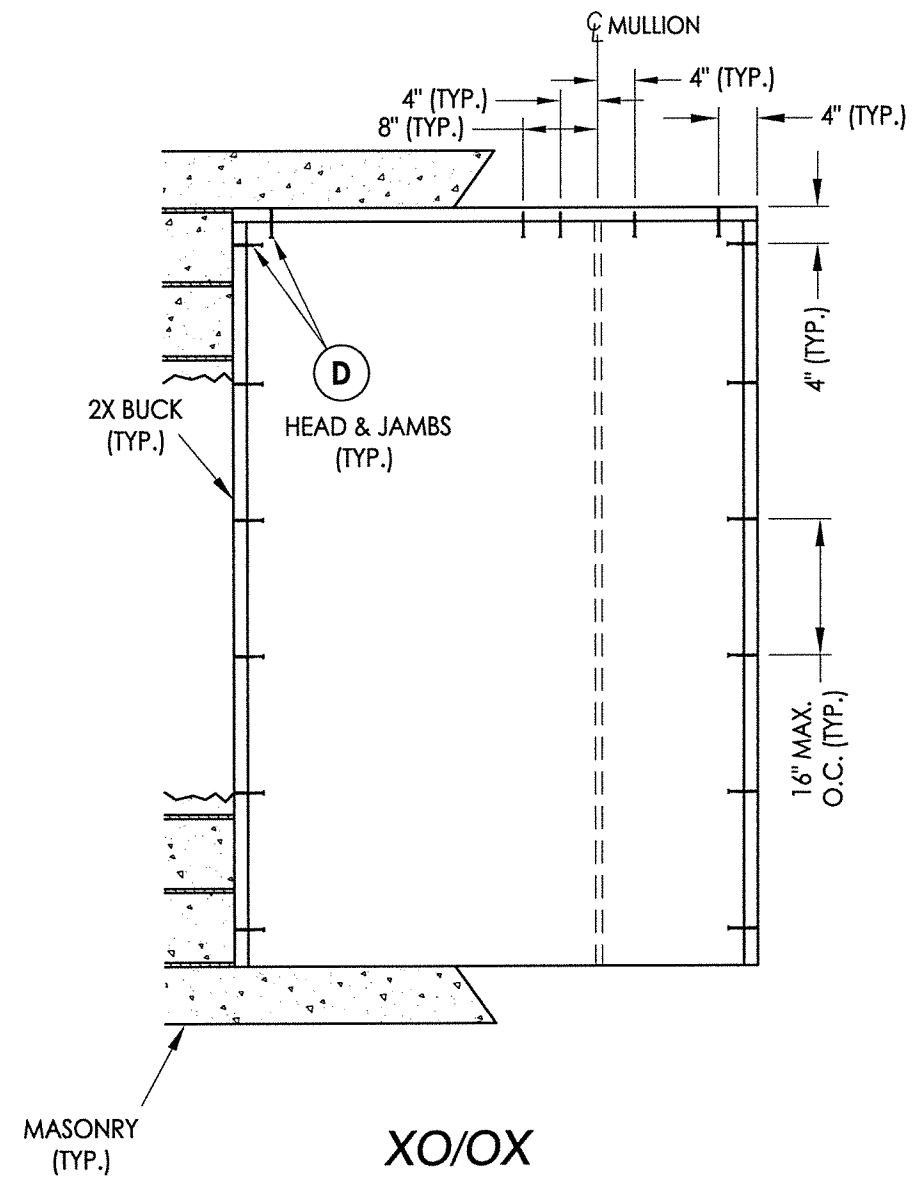
PART OR ASSEMBLY:  
VERTICAL CROSS  
SECTIONS (THRESHOLDS)

NO.	DATE	BY	REVISIONS

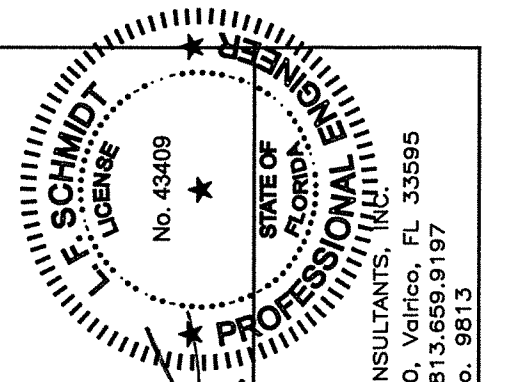
DATE: 8/10/16  
SCALE: N.T.S.  
DWG. BY: JK  
CHK. BY: LFS  
DRAWING NO.:  
FL-20800.2  
SHEET 8 OF 12



R:\Clients\International Wood Trade\A - Florida Product Approvals\FL-20800 Swinging Exterior Door Assemblies\C - Drawings\FL-20800 (2014)\FL-20800.1-3.dwg, 9.2



**2X BUCK ANCHORING**



*LFS*  
*P. 24/16*

Documents Prepared By:  
 Lyndon F. Schmidt  
 P.E. No. 43409

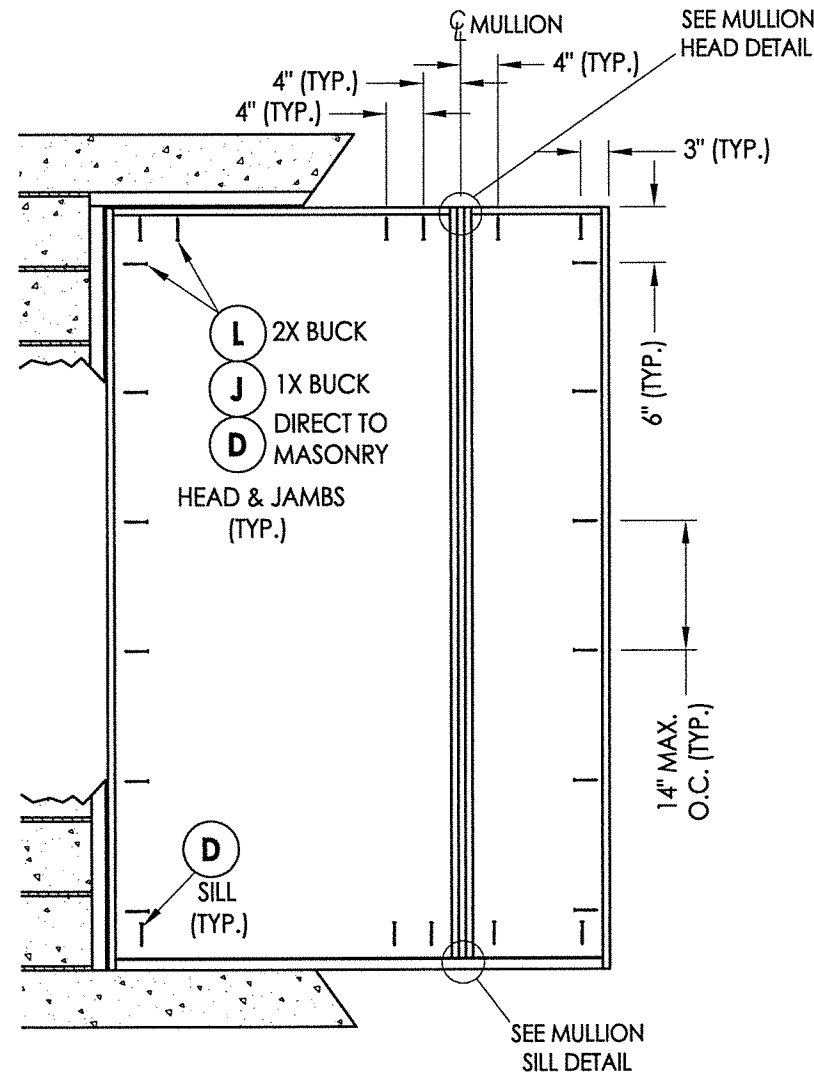
*RW* BUILDING CONSULTANTS, INC.  
 P.O. Box 230, Valrico, FL 33595  
 Phone No.: 813.659.9197  
 FBPE C.A. No. 9813

PRODUCT:  
 INTERNATIONAL WOOD TRADE  
 WOOD DOOR

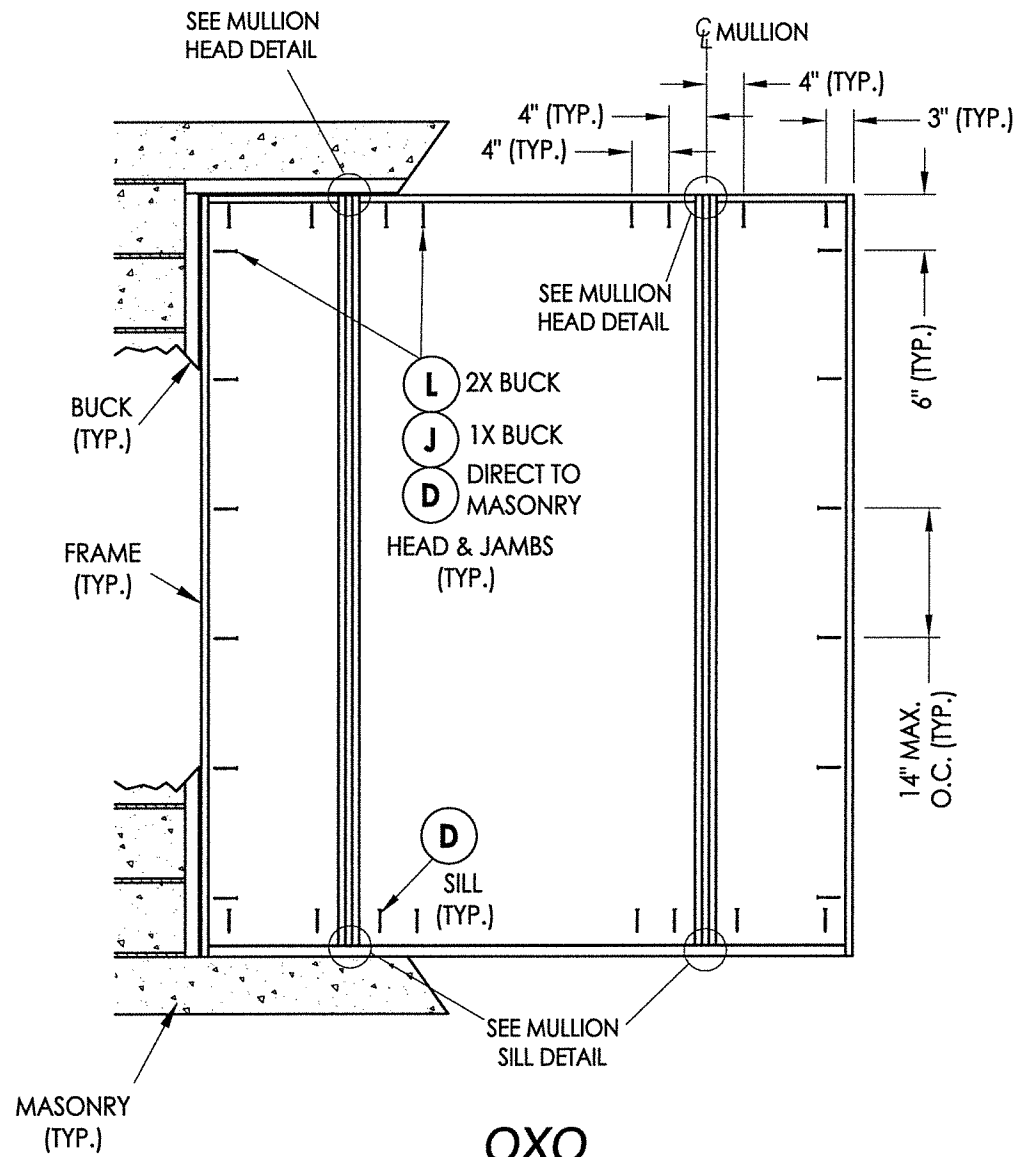
PART OR ASSEMBLY:  
 BUCK ANCHORING

NO.	DATE	BY

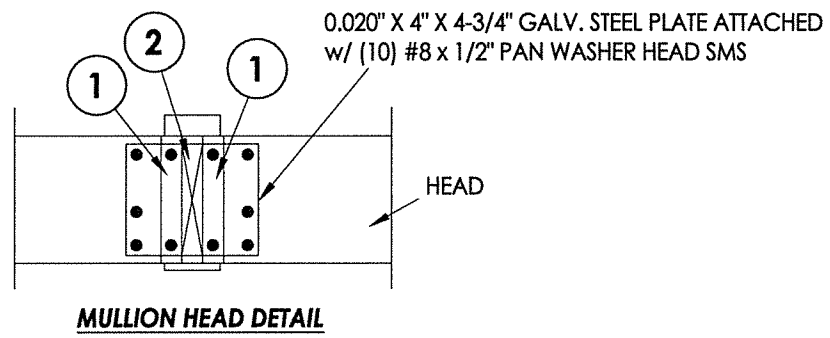
DATE: 8/10/16  
 SCALE: N.T.S.  
 DWG. BY: JK  
 CHK. BY: LFS  
 DRAWING NO.: FL-20800.2  
 SHEET 9 OF 12



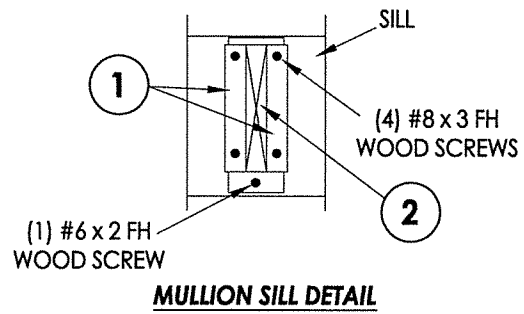
XO/OX



OXO



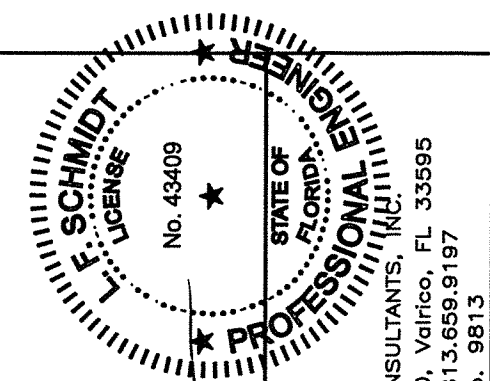
MULLION HEAD DETAIL



MULLION SILL DETAIL

**FRAME ANCHORING**

NOTE:  
1. ALL FRAME CORNERS SECURED TO HEAD & SILL w/ (3) #8 X 3" FH WOOD SCREWS.

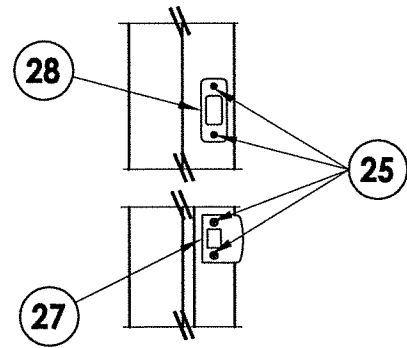


*LFS*  
8/24/16  
Documents Prepared By:  
Lyndon F. Schmidt  
P.E. No. 43409  
**RW** BUILDING CONSULTANTS, INC.  
P.O. Box 230, Valrico, FL 33595  
Phone No.: 813.659.9197  
FBPE C.A. No. 9813

PRODUCT:	INTERNATIONAL WOOD TRADE WOOD DOOR
PART OR ASSEMBLY:	FRAME ANCHORING

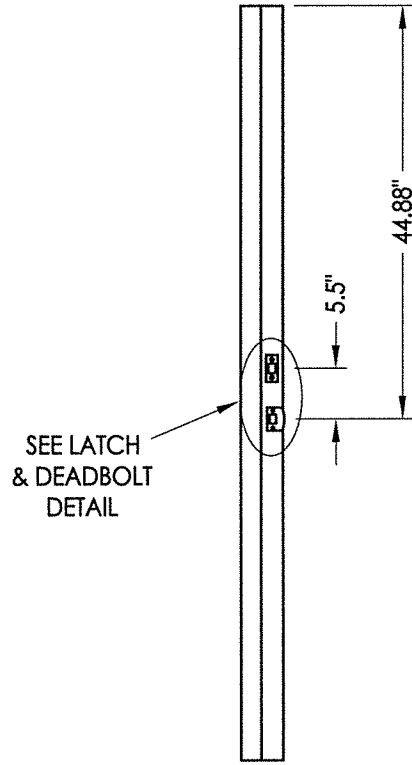
NO.	DATE	BY	REVISIONS

DATE: 8/10/16  
SCALE: N.T.S.  
DWG. BY: JK  
CHK. BY: LFS  
DRAWING NO.: FL-20800.2  
SHEET 10 OF 12

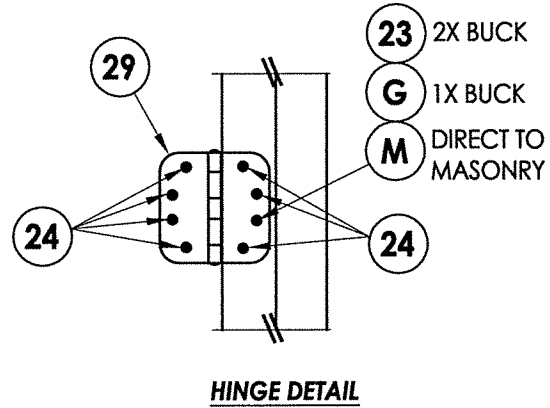


**LATCH & DEADBOLT STRIKE DETAIL**

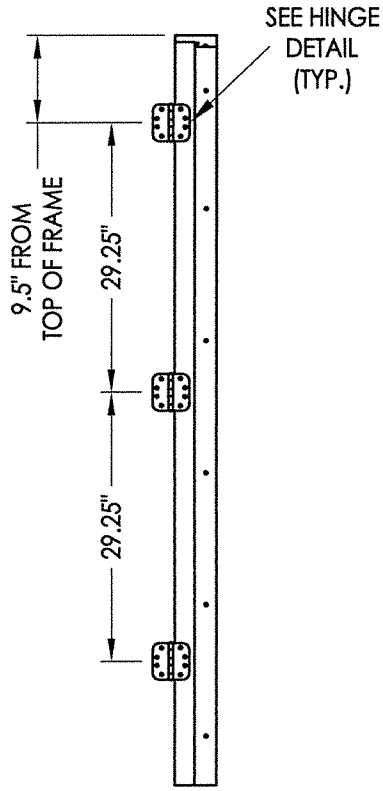
**LATCH & DEADBOLT HARDWARE DETAILS**



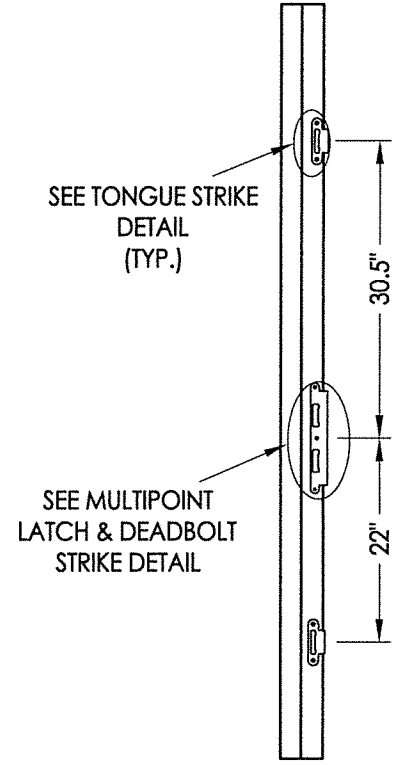
**STRIKE JAMB**  
Latch and Deadbolt



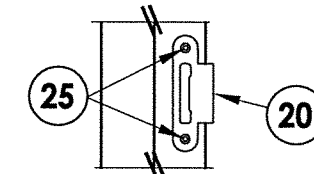
**HINGE DETAIL**



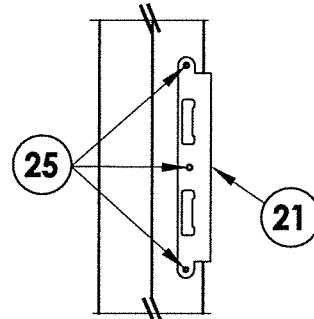
**HINGE JAMB**



**STRIKE JAMB**  
Multipoint Lock

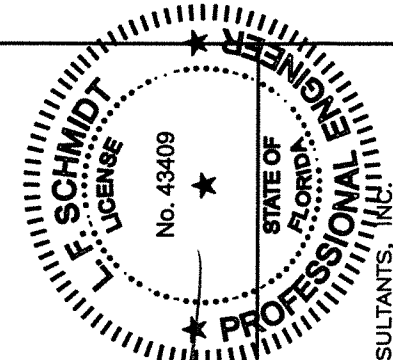


**TONGUE STRIKE DETAIL**



**MULTIPOINT LATCH & DEADBOLT STRIKE DETAIL**

**MULTIPOINT LOCK HARDWARE DETAILS**



*LFS*  
8/24/16

Documents Prepared By:  
Lyndon F. Schmidt  
P.E. No. 43409

**R.W.** BUILDING CONSULTANTS, INC.  
P.O. Box 230, Vairico, FL 33595  
Phone No.: 813.659.9197  
FBPE C.A. No. 9813

PRODUCT:  
INTERNATIONAL WOOD TRADE  
WOOD DOOR

PART OR ASSEMBLY:  
HARDWARE DETAILS

NO.	DATE	BY	REVISIONS

DATE: 8/17/16

SCALE: N.T.S.

DWG. BY: JK

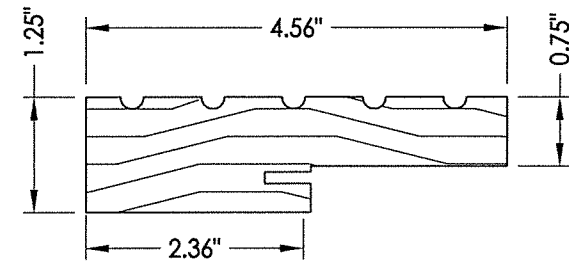
CHK. BY: LFS

DRAWING NO.:

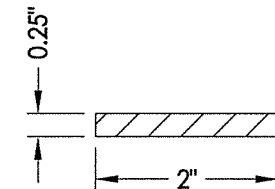
FL-20800.2

SHEET 11 OF 12

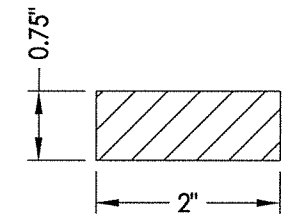
BILL OF MATERIALS		
ITEM #	DESCRIPTION	MATERIAL
A	1X BUCK (SG >= 0.42)	WOOD
B	2X BUCK (SG >= 0.42)	WOOD
C	1/4" MAX. SHIM SPACE	-
D	1/4" X 2-3/4" PFH ELCO OR ITW CONCRETE SCREW	STEEL
E	MASONRY - 3,000 PSI MIN. CONCRETE CONFORMING TO ACI 301 OR HOLLOW BLOCK CONFORMING TO ASTM C90	CONCRETE
G	3/16" X 3-1/4" PFH ITW CONCRETE SCREW	STEEL
J	1/4" X 3-3/4" PFH ELCO OR ITW CONCRETE SCREW	STEEL
L	#10 X 2-1/2" PFH WOOD SCREW (1.15" MIN. EMBEDMENT)	STEEL
M	3/16" X 2-1/4" PFH ITW CONCRETE SCREW	STEEL
1	WOOD JAMB (SAPELE, G>= 0.55)	WOOD
2	1X MULLION (PINE, G>= 0.42)	WOOD
5	MULLION TRIM (SAPELE, G>= 0.55)	WOOD
6	MULLION TRIM (SAPELE, G>= 0.55)	WOOD
7	WEATHERSTRIP	FOAM
8	SWEEP	VINYL
20	MULTIPOINT TONGUE STRIKE PLATE	STEEL
21	MULTIPOINT LATCH & DEADBOLT STRIKE PLATE	STEEL
23	#12 X 2-1/2" PFH WOOD SCREW	STEEL
24	#12 X 1-1/4" PFH WOOD SCREW	STEEL
25	#8 X 2-1/2" PFH WOOD SCREW	STEEL
27	LATCH STRIKE PLATE	STEEL
28	DEADBOLT STRIKE PLATE	STEEL
29	4" X 4" HINGE	STEEL
30	INSWING ADJUSTABLE THRESHOLD	ALUM/WOOD
35	OUTSWING BUMP THRESHOLD	ALUM/WOOD
40	DOOR PANEL	WOOD
50	SIDELITE PANEL	WOOD



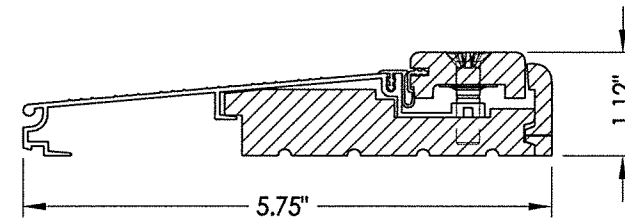
1 WOOD JAMB



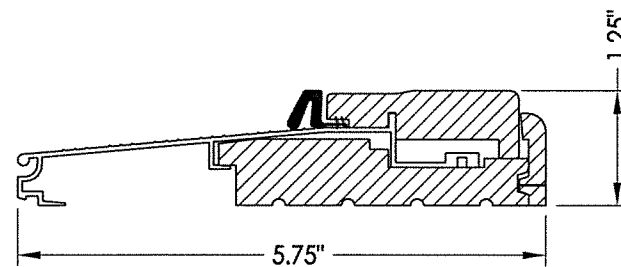
5 MULLION TRIM



6 MULLION TRIM



30 INSWING ADJUSTABLE THRESHOLD  
Imperial 5Y



35 OUTSWING BUMP THRESHOLD  
Imperial

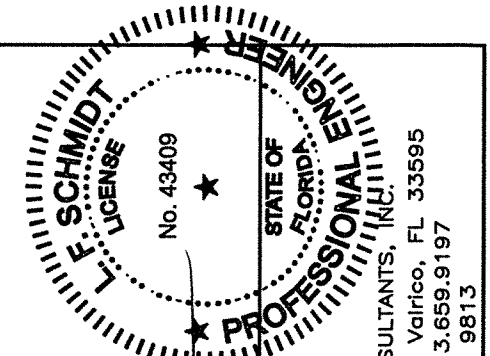
**CONCRETE ANCHOR NOTES:**

- Concrete anchor locations at the corners may be adjusted to maintain the min. edge distance to mortar joints.
- Concrete anchor locations noted as "MAX. ON CENTER" must be adjusted to maintain the min. edge distance to mortar joints, additional concrete anchors may be required to ensure the "MAX. ON CENTER" dimension are not exceeded.
- Concrete anchor table:

ANCHOR TYPE	ANCHOR SIZE	MIN. EMBEDMENT	MIN. CLEARANCE TO MASONRY EDGE	MIN. CLEARANCE TO ADJACENT ANCHOR
ITW TAPCON®	1/4"	1-1/4"	2"	4"
ELCO ULTRACON®	1/4"	1-1/4"	1"	4"
ITW TAPCON®	3/16"	1-1/4"	3"	1-1/2"

**WOOD SCREW INSTALLATION NOTES:**

- Maintain a minimum 5/8" edge distance, 1" end distance, & 1" o.c. spacing of wood screws to prevent the splitting of wood.



Documents Prepared By:  
Lyndon F. Schmidt  
P.E. No. 43409

R.W. BUILDING CONSULTANTS, INC.  
P.O. Box 230, Valrico, FL 33595  
Phone No.: 813.659.9197  
FBPE C.A. No. 9813

PRODUCT:  
INTERNATIONAL WOOD TRADE  
WOOD DOOR

PART OR ASSEMBLY:  
BILL OF MATERIALS  
& COMPONENTS

NO.	DATE	BY	REVISIONS

DATE: 8/17/16  
SCALE: N.T.S.  
DWG. BY: JK  
CHK. BY: LFS  
DRAWING NO.: FL-20800.2  
SHEET 12 OF 12